

## APPENDIX TABLE OF CONTENTS

|   |    |
|---|----|
| Photographs Taken by Amici Curiae ..... | 1a |
|---|----|

**PHOTOGRAPHS TAKEN BY AMICI CURIAE<sup>1</sup>**

---

**Trash, fire debris at a  
vacated encampment in Portland, Oregon**



---

<sup>1</sup> The photographs in this appendix were taken by Amici and their members.

**Trash left behind at homeless encampment  
in Pendleton, Oregon**



**Encampment in Beaverton, Oregon**



**Campsite in Portland, Oregon**



**Campsite in Spokane, Washington**





**Campsite in Portland, Oregon**



**Needles and trash from a campsite cleanup  
in Pendleton, Oregon**



**Trash and camping equipment left behind  
in Sweet Home, Oregon**



App.6a

**Recreational and other vehicles,  
makeshift structures on private property  
in Airway Heights, Washington**





**Bridge abutment in Klamath Falls, Oregon that has been excavated and used as an encampment**





**Semi-permanent camping structure and tent on  
Central Oregon Transportation District property**



**Fire started by unpermitted campers  
that damaged irrigation infrastructure at  
Klamath Irrigation District**



App.10a

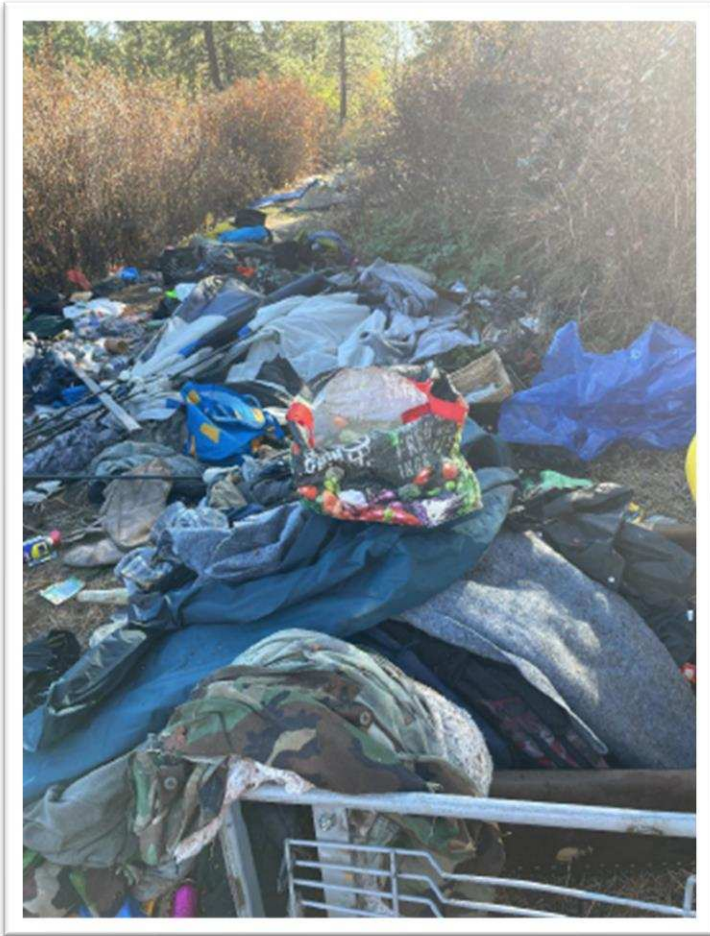
**Encampment fire left burning in multiple locations in Umatilla County Fire District No. 1**





App.11a

**Abandoned possessions strewn along a paved  
40-mile pedestrian and non-motorized vehicle  
trail in Spokane Valley, Washington**



**Garbage and debris collected from homeless encampment near Spokane, Washington**



**Homeless encampment in Portland, Oregon**

