

JA 1288

(See foldout next page)

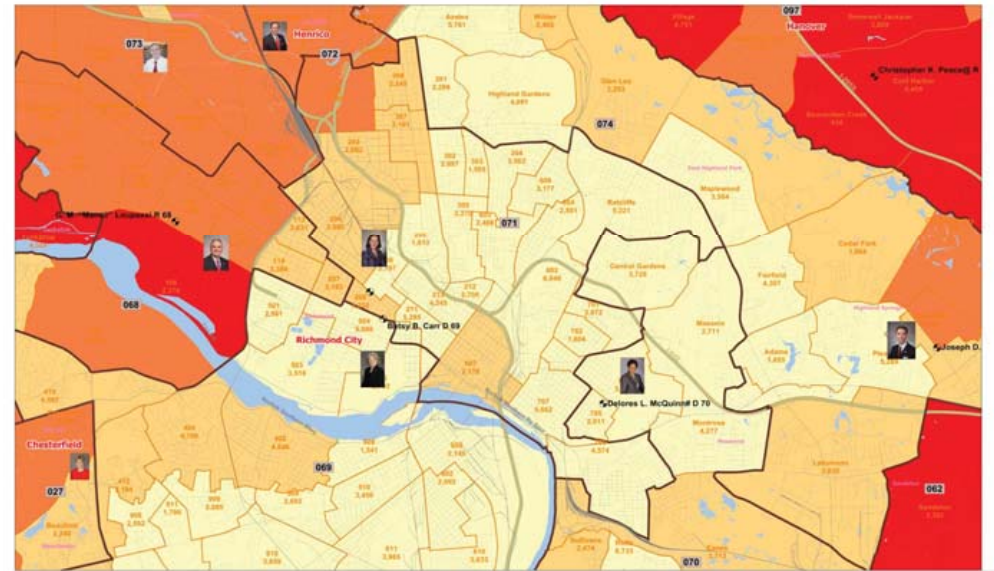
JA 1289

### Richmond Area Districts-2011 Plan-%Black



DEFENDANT-INTERVENORS TX 065 - Page 001

### Richmond Area Districts-2011 Plan-2009 Gov-%Rep

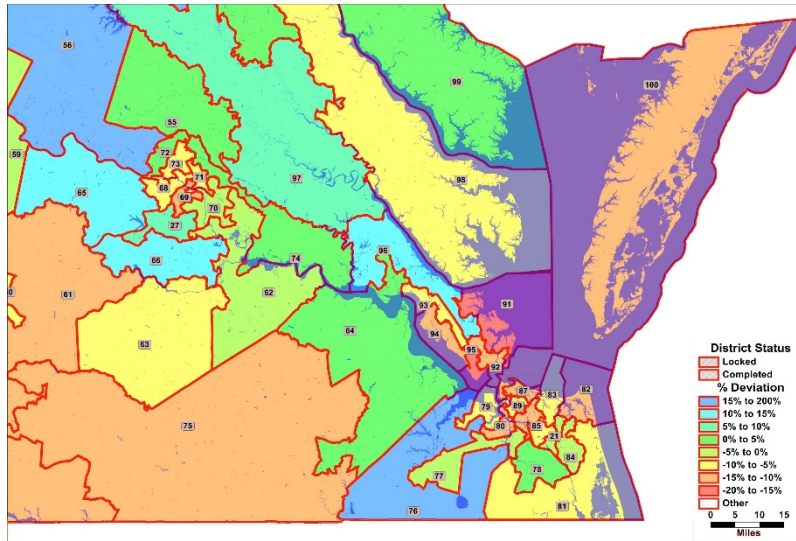


DEFENDANT-INTERVENORS TX 065 - Page 002



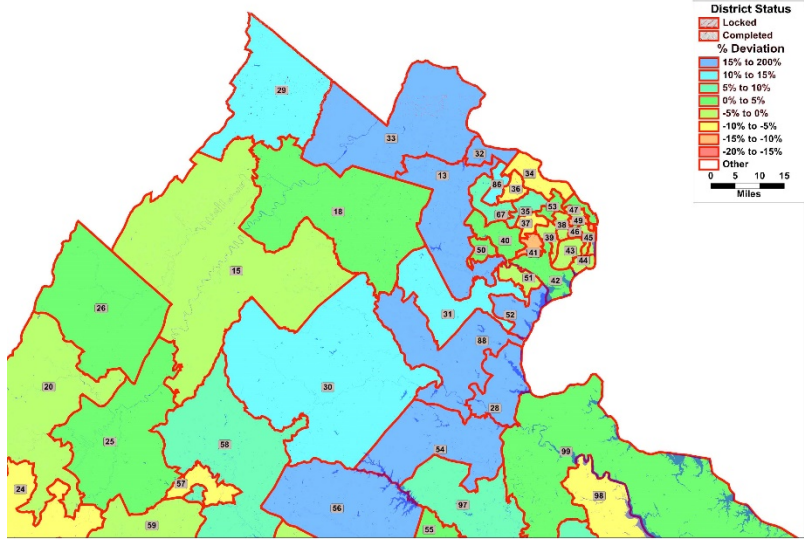
JA 1290

**Map 24**  
**2001 House Districts 2010 Deviations**  
Southeastern Virginia



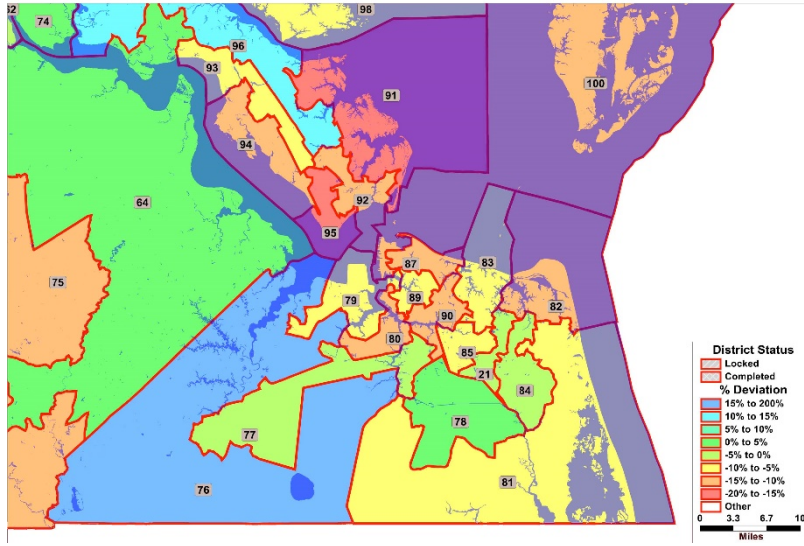
JA 1291

**Map 25**  
**2001 House Districts 2010 Deviations**  
Northern Virginia



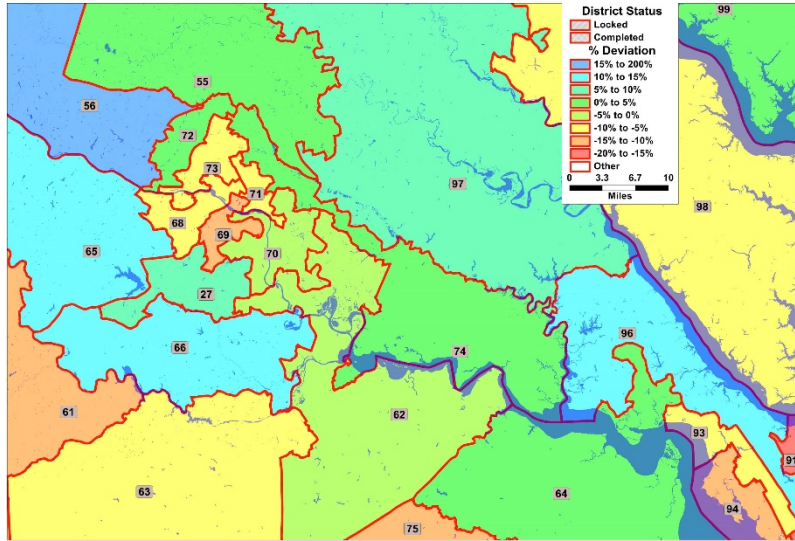
JA 1292

**Map 26**  
**2001 House Districts 2010 Deviations**  
**Norfolk Area Virginia**



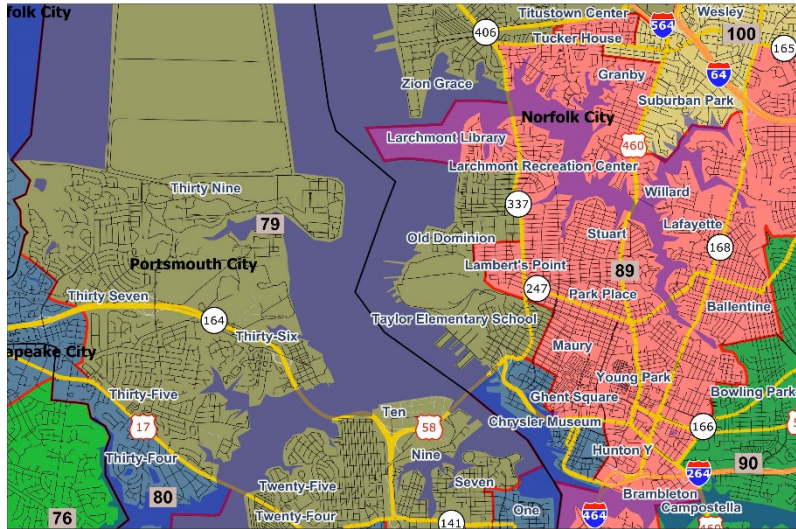
JA 1293

**Map 27**  
**2001 House Districts 2010 Deviations**  
Richmond Area Virginia



JA 1294

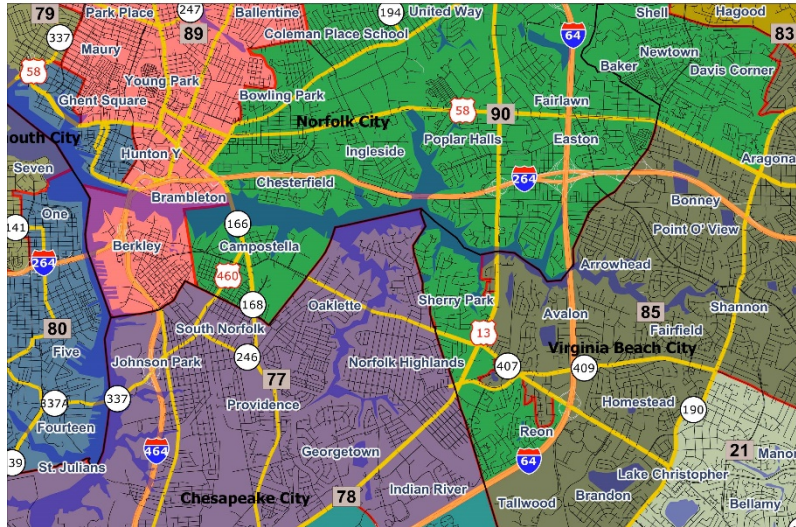
**MAP 28**  
**2011 House District 79**  
**Showing Water Crossings Between Portions of Districts**





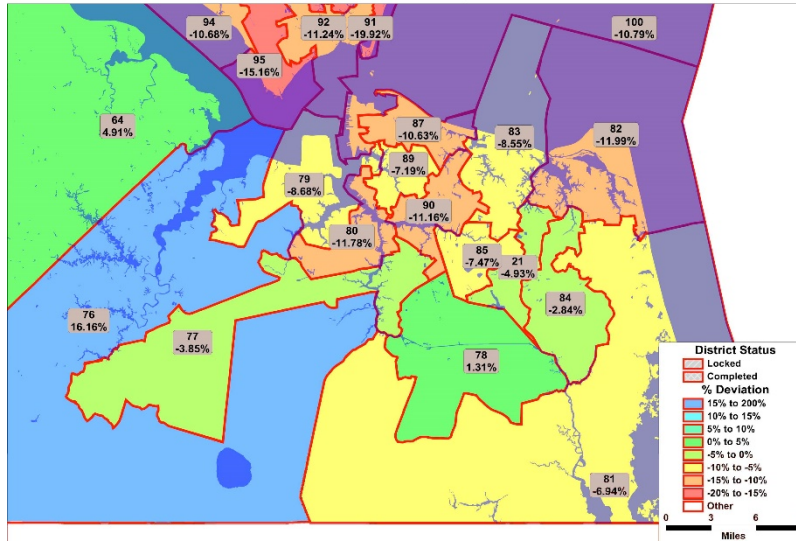
JA 1295

**MAP 29**  
**2011 House District 90**  
**Showing Water Crossings Between Portions of Districts**



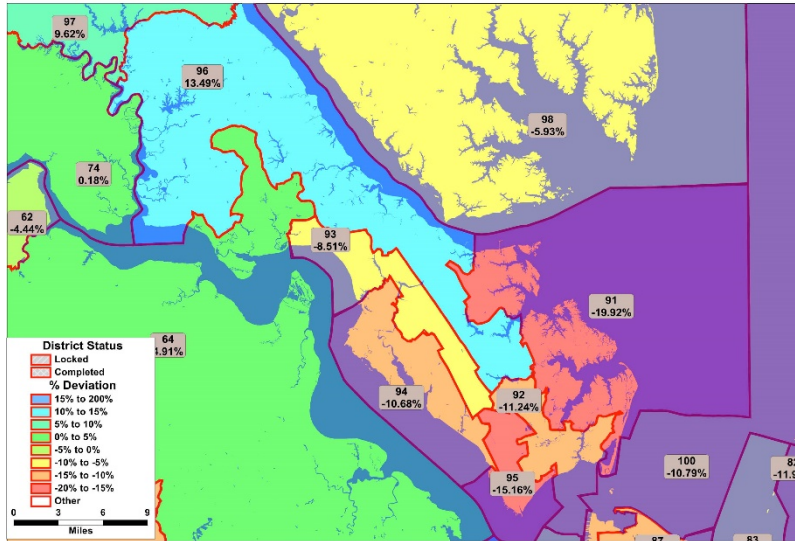
JA 1296

**Map 30**  
2001 House Districts 2010 Deviations  
Norfolk Area Virginia



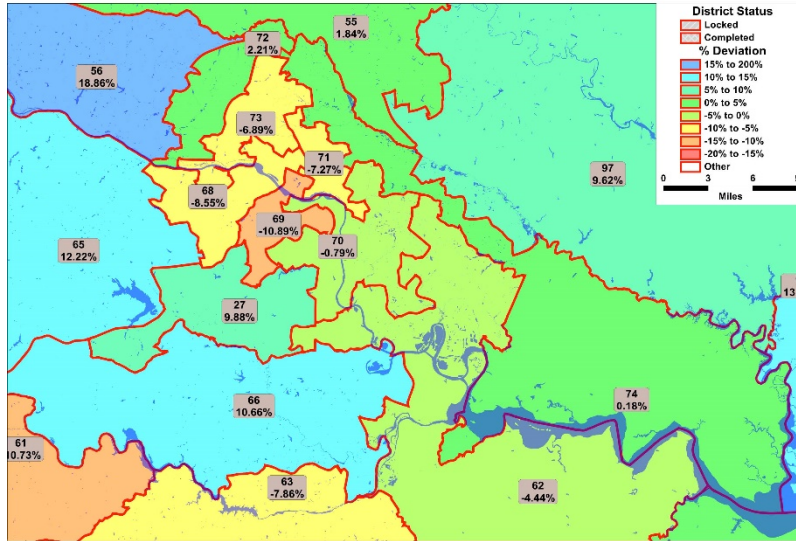
JA 1297

**Map 31**  
2001 House Districts 2010 Deviations  
Deviations Hampton-Newport w Pcts.

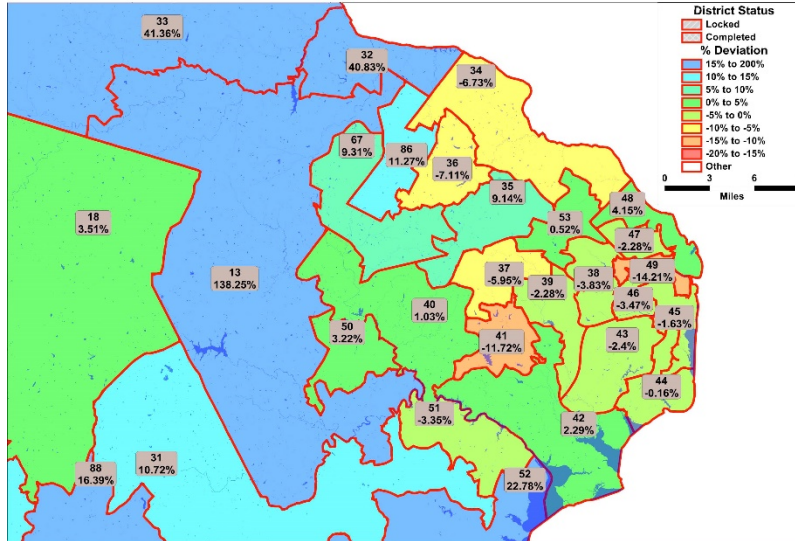


JA 1298

**Map 32**  
2001 House Districts 2010 Deviations  
Deviations Richmond Area w Pcts.



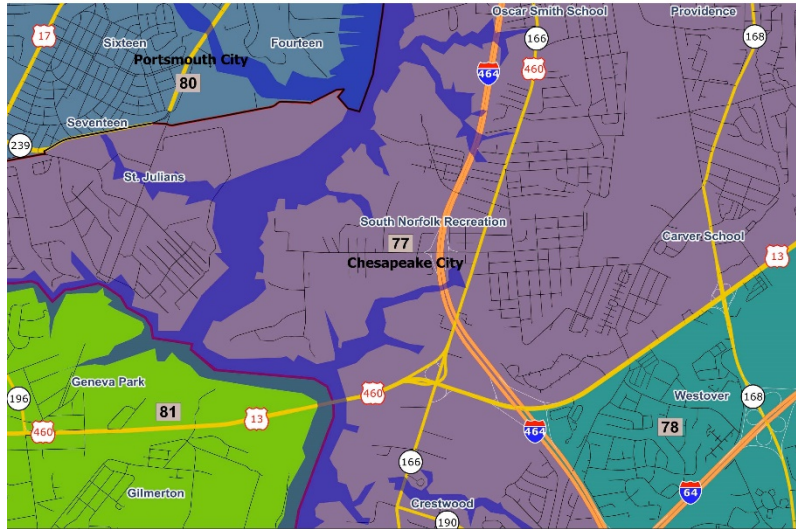
**Map 33**  
2001 House Districts 2010 Deviations  
Deviations Fairfax Arlington Alexandria Area w Pcts.





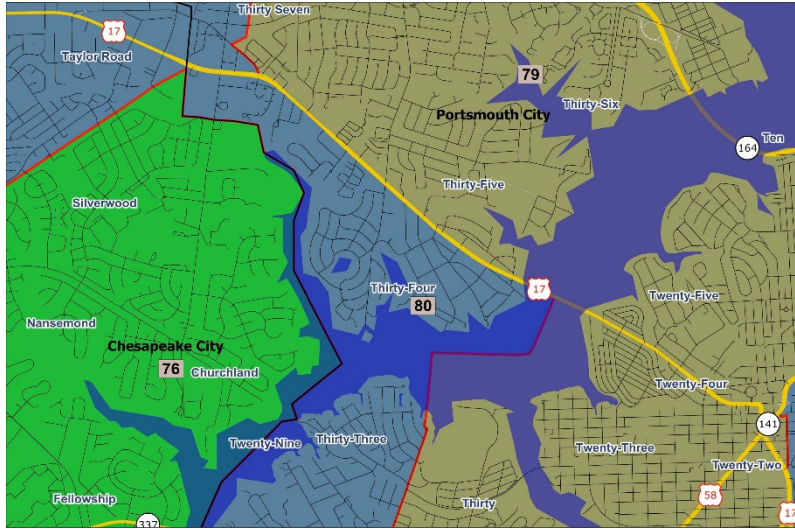
JA 1300

**MAP 34**  
**2011 House District 77**  
**Showing Water Crossings Between Portions of Districts**



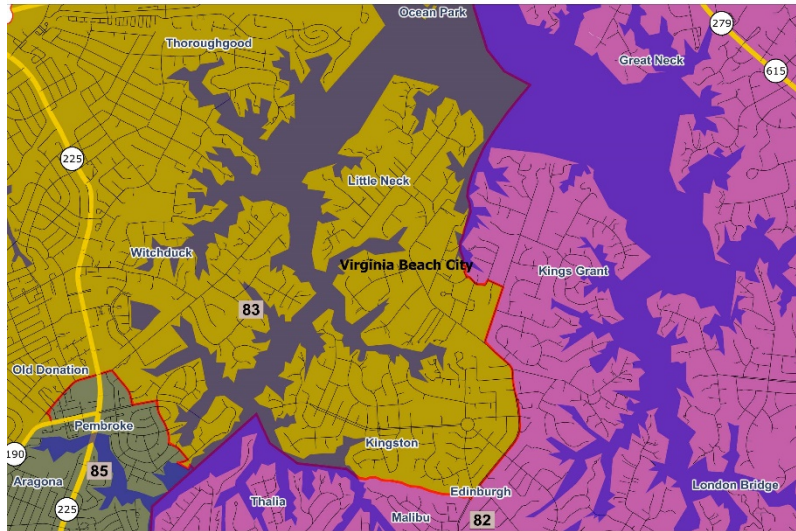
JA 1301

**MAP 35**  
**2011 House District 80**  
**Showing Water Crossings Between Portions of Districts**



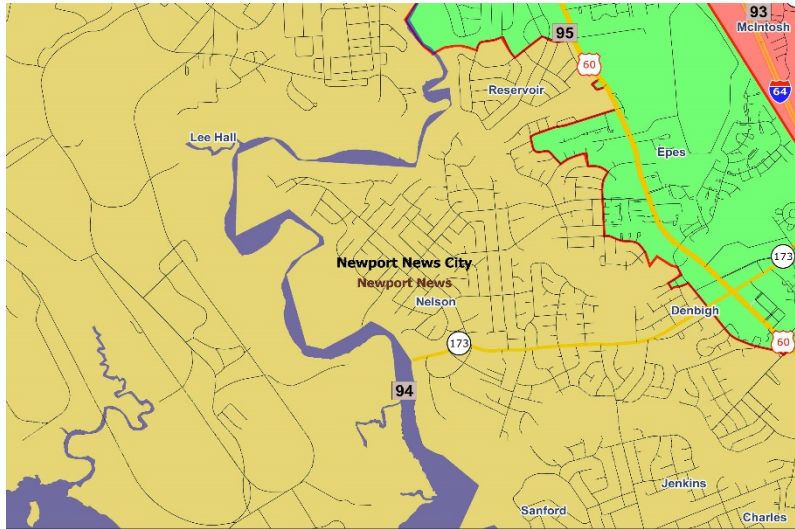
JA 1302

**MAP 36**  
**2011 House District 83**  
**Showing Water Crossings Between Portions of Districts**



JA 1303

**MAP 37**  
**2011 House District 94**  
**Showing Water Crossings Between Portions of Districts**

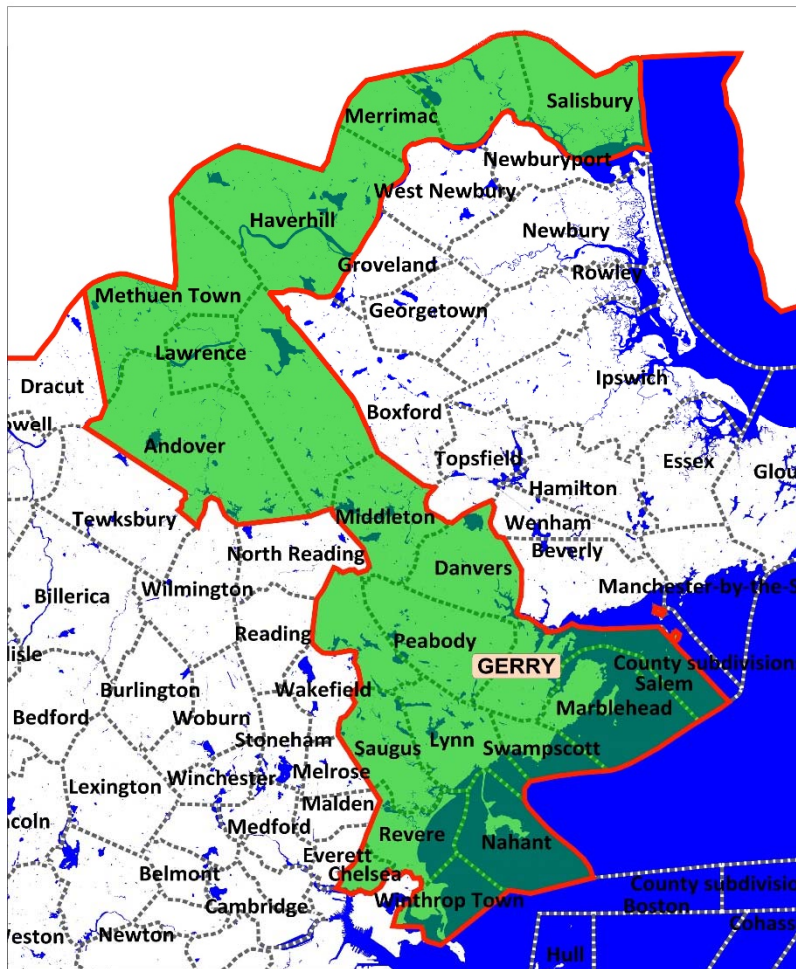






JA 1305

# MAP 39 THE ORIGINAL GERRYMANDER





JA 1307

Plan Name: MA Gerry  
Plan Type: State House  
Date: 6/19/2015  
Time: 2:09:39PM  
Administrator: TBH

Measures of Compactness

6/19/2015

---

Sum	N/A	N/A
Min	0.31	0.15
Max	0.31	0.15
Mean	0.31	0.15
Std. Dev.	0.00	0.00

<u>DISTRICT</u>	<u>Reock</u>	<u>Polsby-Popper</u>
<u>GERRY</u>	<u>0.31</u>	<u>0.15</u>

---

JA 1308

Plan Name: MA Gerry wo Water  
Plan Type: State House  
Date: 6/19/2015  
Time: 2:02:41PM  
Administrator: TBH

Measures of Compactness

6/19/2015

---

Sum	N/A	N/A
Min	0.26	0.07
Max	0.26	0.07
Mean	0.26	0.07
Std. Dev.	0.00	0.00

<u>DISTRICT</u>	<u>Reock</u>	<u>Polsby-Popper</u>
<u>GERRY</u>	<u>0.26</u>	<u>0.07</u>

---

JA 1309

TABLE 16  
2001 House Plan Deviations  
Norfolk Area

Majority Non-Hispanic White Districts	
District	%Deviation
21	-4.93
78	1.31
79	-8.68
81	-6.94
82	-11.99
83	-8.55
84	-2.84
85	-7.47
87	-10.63
100	-10.79
Negative Deviation	-71.51
76	16.16
Positive Deviation	16.16
Overall Maj. NH Wht Deviations	-55.35
Majority African American Districts	
77	-3.85
80	-11.78
89	-7.19
90	-11.16
Overall Maj. Afr-am. Deviations	-33.98
Overall Norfolk Area Deviations	-105.49

Source: U.S. Census Bureau – 2010 Decennial Census Counts



JA 1310

TABLE 17  
2011 House Plan  
Districts Not Connect by Road  
With Water or River Crossings

District	Majority Race Group
76	Non-Hispanic White
77	African-American
79	Non-Hispanic White
80	African-American
83	Non-Hispanic White
90	African-American
94	Non-Hispanic White
100*	Non-Hispanic White

\* Crosses Chesapeake Bay

**TABLE 18**

**2011 HOUSE OF DELEGATES PLAN**

**Combined Compactness Scores**

District Number	Reock Score	Polsby-Popper Score	Roeck + Polsby	Reock Rank	Polsby Rank	Combined Rank
74	0.16	0.12	0.29	3	5	8
13	0.16	0.13	0.29	2	8	10
95	0.14	0.14	0.28	1	9	10
22	0.20	0.11	0.31	9	3	12
77	0.19	0.15	0.34	6	12	18
48	0.18	0.16	0.33	4	15	19
17	0.25	0.09	0.34	20	2	22
72	0.26	0.08	0.34	25	1	26
93	0.22	0.16	0.38	13	14	27
80	0.26	0.11	0.37	24	4	28
5	0.19	0.17	0.36	7	21	28
87	0.22	0.17	0.38	11	20	31
23	0.26	0.15	0.41	22	11	33
37	0.18	0.18	0.36	5	28	33
14	0.24	0.16	0.40	17	18	35
96	0.20	0.17	0.38	10	26	36
49	0.24	0.16	0.41	18	19	37
88	0.28	0.13	0.40	31	7	38
63	0.25	0.16	0.41	21	17	38
20	0.27	0.15	0.43	30	13	43
51	0.24	0.18	0.42	16	30	46
35	0.20	0.19	0.40	8	38	46
40	0.26	0.17	0.43	23	24	47
10	0.23	0.18	0.42	15	32	47
25	0.26	0.18	0.44	26	29	55
43	0.22	0.21	0.43	12	43	55
62	0.36	0.13	0.49	55	6	61
61	0.32	0.17	0.49	39	25	64
2	0.30	0.18	0.48	37	27	64
34	0.24	0.22	0.46	19	50	69
73	0.39	0.15	0.53	61	10	71
64	0.37	0.16	0.53	58	16	74
58	0.32	0.19	0.51	41	34	75
99	0.27	0.21	0.48	29	47	76
52	0.23	0.25	0.49	14	64	78
39	0.35	0.19	0.54	47	33	80
59	0.30	0.21	0.51	36	45	81
3	0.28	0.21	0.50	34	48	82

JA 1312  
1

16	0.36	0.18	0.55	56	31	87
42	0.35	0.20	0.55	48	40	88
33	0.33	0.23	0.56	42	53	95
56	0.34	0.22	0.56	45	51	96
19	0.43	0.17	0.60	74	23	97
31	0.38	0.19	0.58	60	37	97
29	0.36	0.21	0.57	52	46	98
71	0.33	0.24	0.57	43	55	98
6	0.27	0.26	0.52	28	71	99
67	0.32	0.25	0.57	40	61	101
70	0.40	0.19	0.59	67	35	102
45	0.29	0.26	0.55	35	67	102
75	0.41	0.19	0.60	68	36	104
89	0.40	0.20	0.59	65	39	104
1	0.26	0.30	0.57	27	78	105
9	0.35	0.24	0.59	50	57	107
98	0.28	0.26	0.54	33	74	107
76	0.48	0.17	0.65	87	22	109
86	0.35	0.25	0.60	49	60	109
27	0.35	0.25	0.60	46	63	109
68	0.36	0.25	0.60	53	58	111
12	0.39	0.22	0.60	63	49	112
92	0.34	0.26	0.59	44	69	113
66	0.31	0.27	0.58	38	75	113
97	0.43	0.21	0.64	71	44	115
81	0.40	0.23	0.62	64	52	116
90	0.46	0.20	0.66	79	42	121
85	0.40	0.24	0.64	66	56	122
100	0.28	0.37	0.65	32	94	126
28	0.39	0.26	0.64	62	66	128
4	0.49	0.20	0.68	88	41	129
65	0.37	0.27	0.64	57	76	133
24	0.44	0.25	0.69	76	59	135
41	0.36	0.32	0.68	54	84	138
60	0.38	0.31	0.69	59	82	141
84	0.44	0.26	0.70	75	68	143
94	0.35	0.38	0.73	51	95	146
79	0.45	0.26	0.71	77	70	147
7	0.50	0.25	0.75	89	62	151
54	0.47	0.25	0.72	86	65	151
36	0.43	0.30	0.73	72	79	151
21	0.42	0.31	0.73	70	81	151
18	0.62	0.24	0.85	99	54	153
47	0.41	0.33	0.74	69	85	154
44	0.43	0.32	0.75	73	83	156
8	0.47	0.26	0.73	85	72	157

JA 1313  
2

32	0.46	0.31	0.77	83	80	163
53	0.46	0.34	0.79	80	87	167
50	0.46	0.34	0.80	81	88	169
11	0.59	0.26	0.85	97	73	170
55	0.57	0.28	0.85	95	77	172
26	0.46	0.36	0.82	82	92	174
57	0.45	0.41	0.86	78	96	174
78	0.46	0.35	0.81	84	91	175
15	0.55	0.34	0.88	94	86	180
83	0.52	0.34	0.86	90	90	180
69	0.52	0.34	0.86	92	89	181
30	0.53	0.36	0.90	93	93	186
46	0.52	0.55	1.07	91	100	191
82	0.57	0.45	1.02	96	97	193
91	0.60	0.47	1.07	98	99	197
38	0.62	0.45	1.08	100	98	198

**Note: African-American District Numbers are Blue.**

Min	0.14	0.08
Max	0.62	0.55
Mean	0.36	0.24
Std. Dev.	0.11	0.09

JA 1314

TABLE 19  
STATE OF VIRGINIA  
1991 HOUSE OF DELEGATES PLAN  
Districts with Minor River Crossing w/o Roads

Districts are: 21, 62, 64, 72, 76, 77, 79, 82, 90, 91, 98  
and 100.

District 100 crosses Chesapeake Bay from East to  
West.

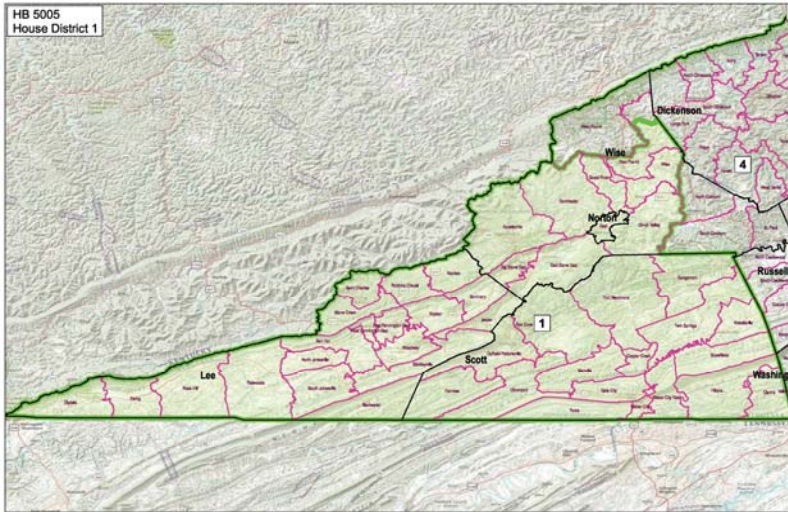
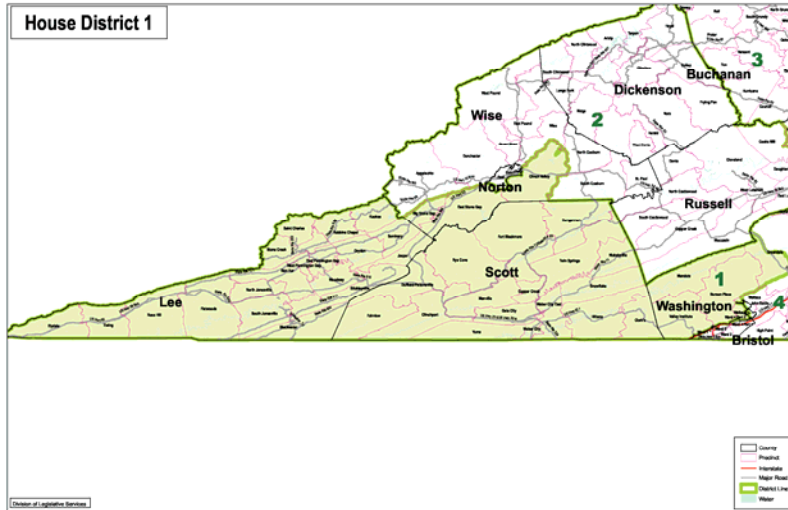
Districts 90 and 98 have two such crossings.

**Appendix Material:  
District Maps for the Benchmark Plan (2010)  
and the Enacted Plan (2011)**

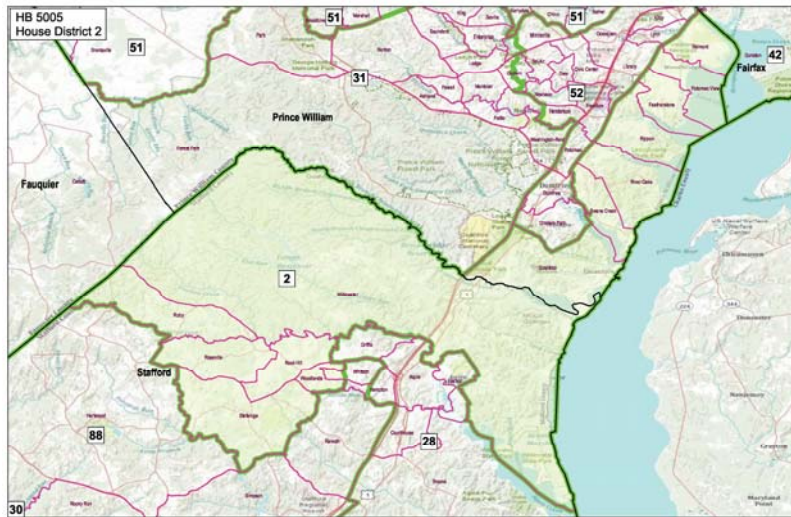
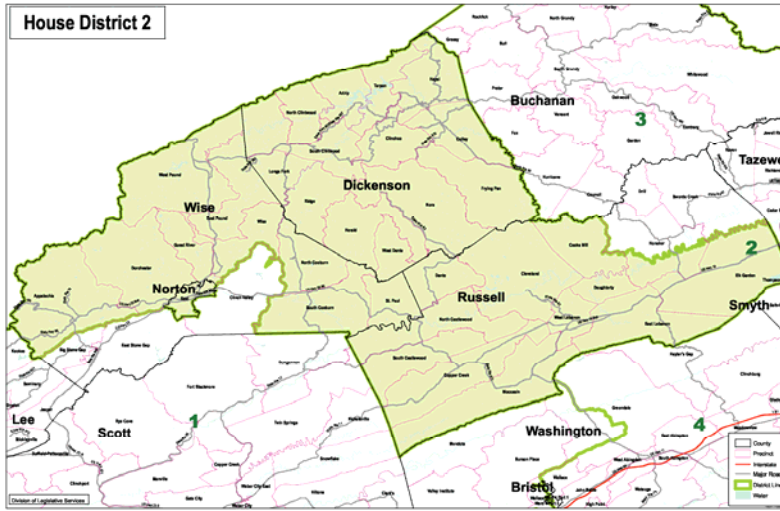
Notes:

- 1) All maps are from the Virginia Division of Legislative Services (DLS) <http://redistricting.dls.virginia.gov/2010/DistrictMaps.aspx>
- 2) The map sets are comparable in a general sense but were clearly prepared independently and illustrate different features.
- 3) Most maps are landscape (horizontal) in format but in some cases either one or both of the maps are portrait (vertical).
- 4) Maps are arranged in district order, 1 to 100, with the map for the Benchmark Plan first and then the map for the Enacted Plan.
- 5) Note that in a few instances the district numbers either changed with respect to incumbents and/or were moved from one part of the state to another. Districts 2, 10, and 87 were reassigned to the northern area of the state.
- 6) Printing this page in duplex mode will preserve the facing aspect of the maps with 2010 on the left and 2011 map on the right.

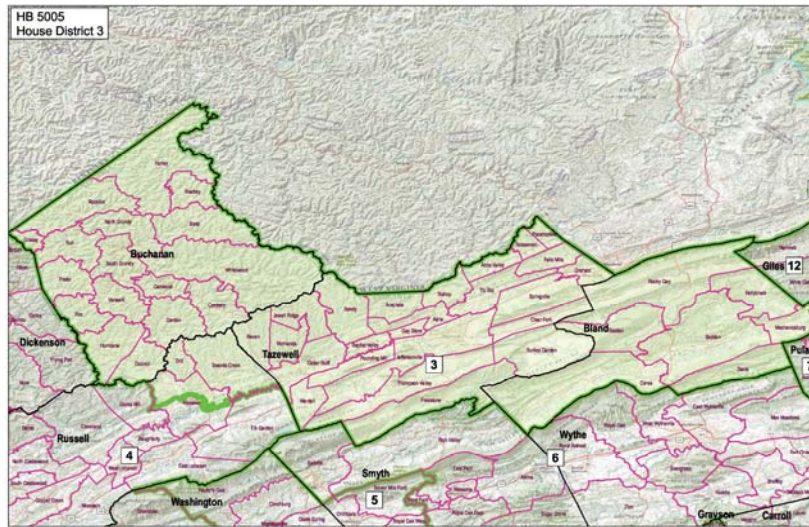
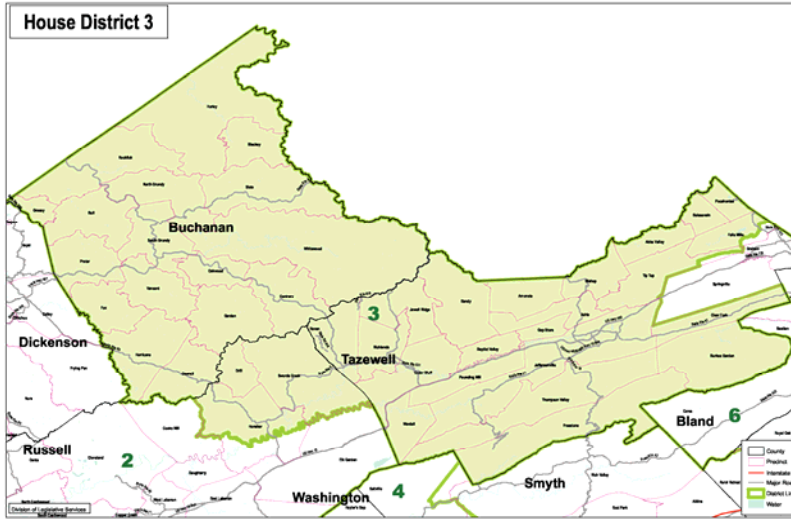




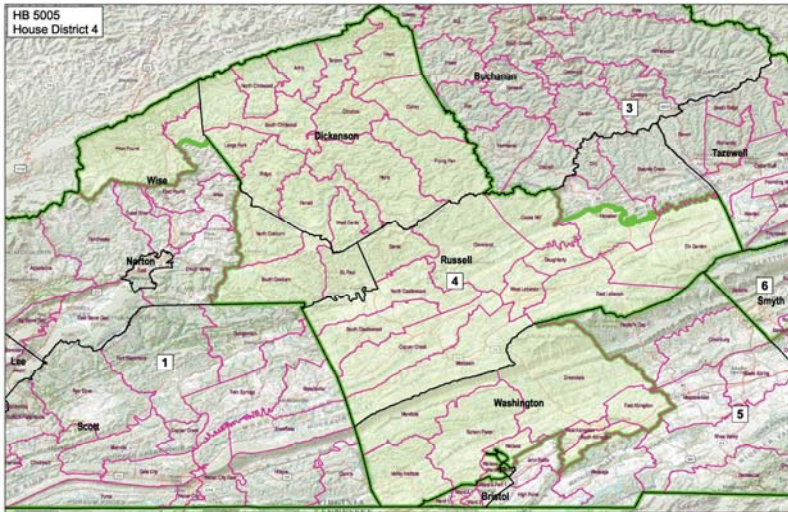
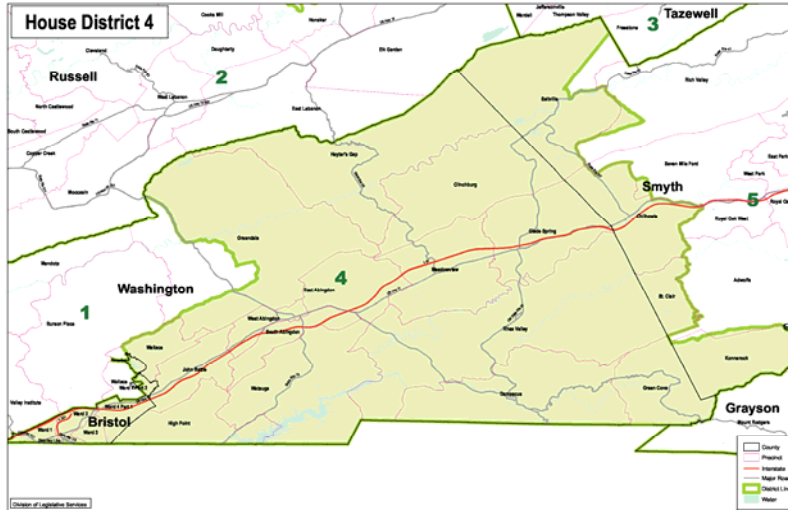
JA 1317



JA 1318

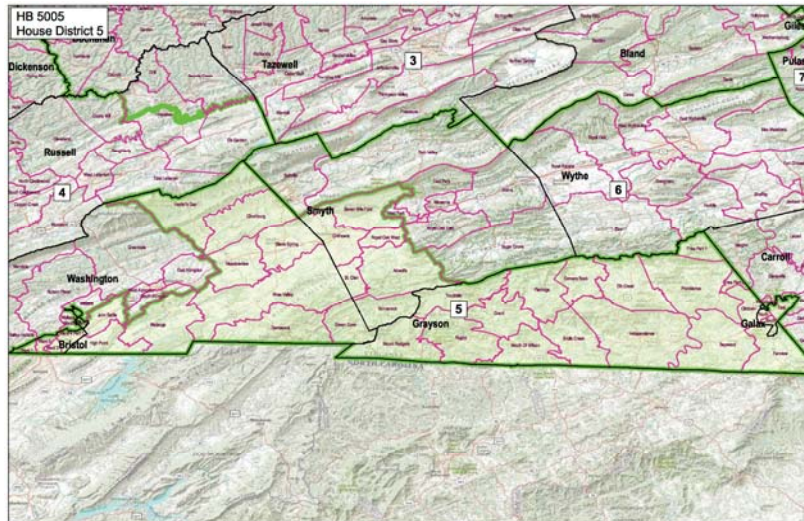
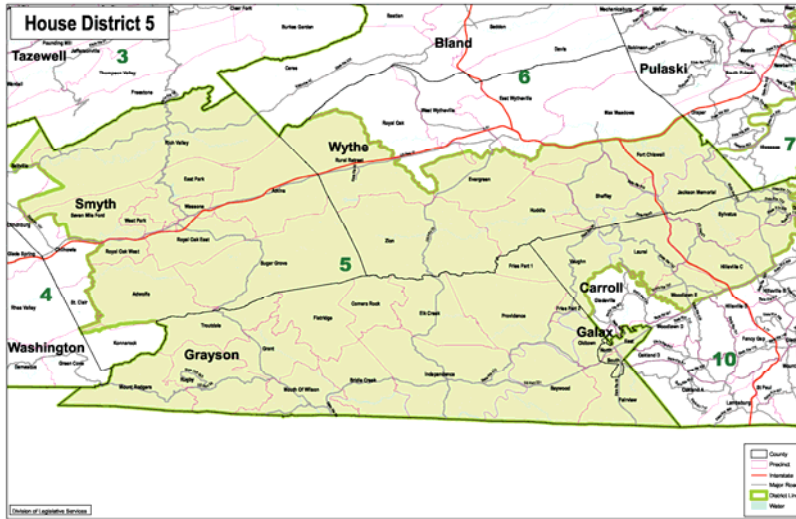


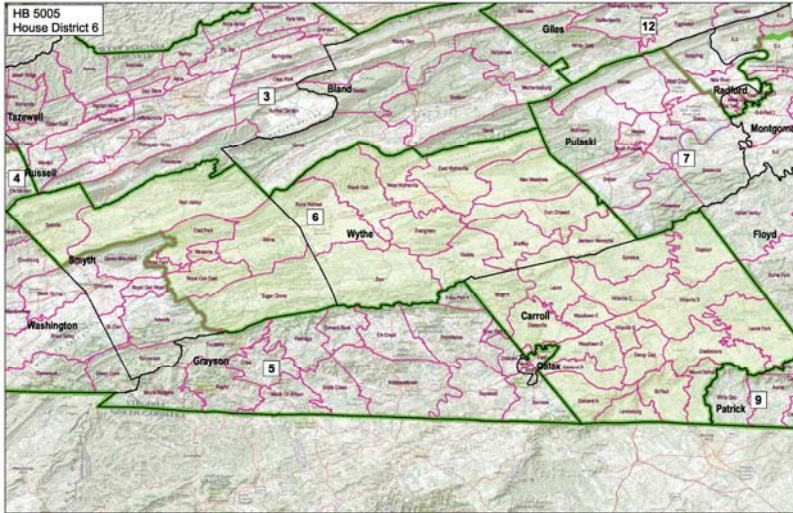
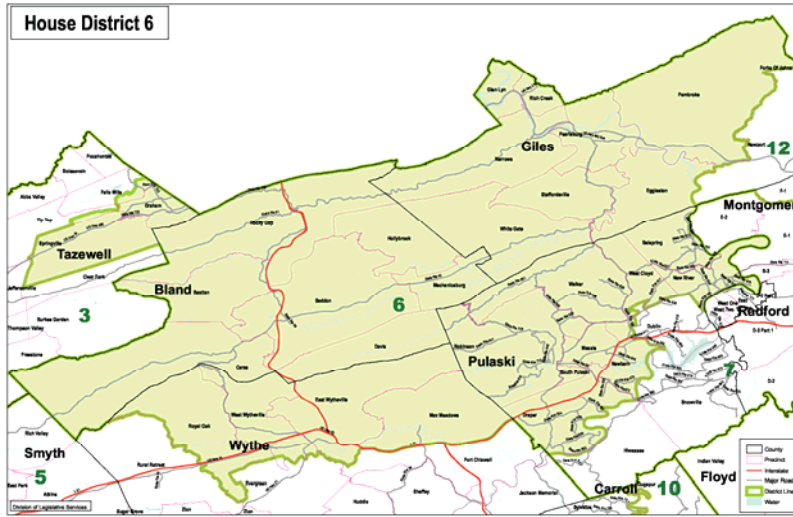
JA 1319



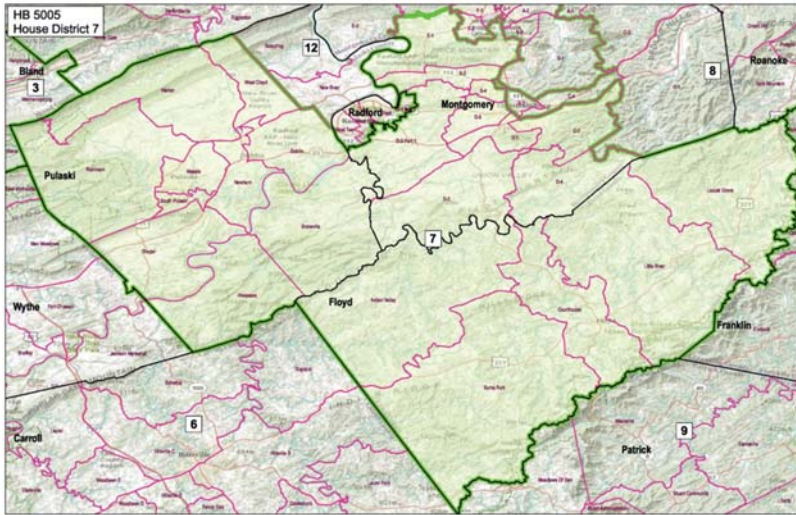
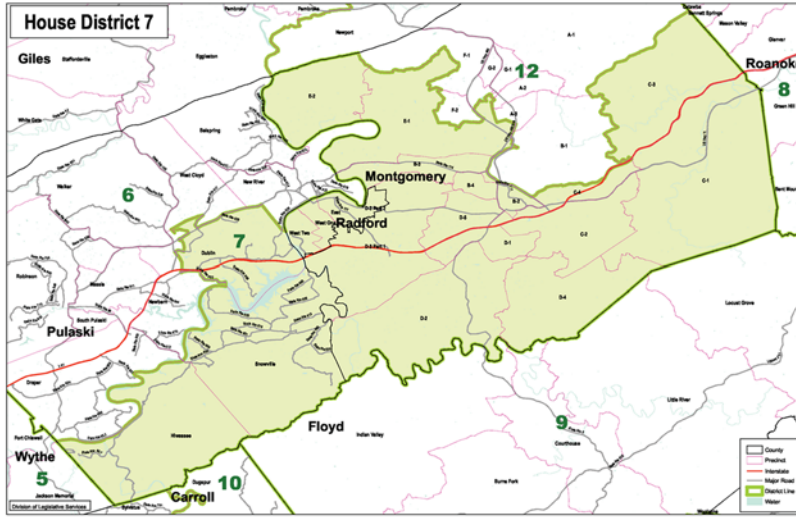


JA 1320

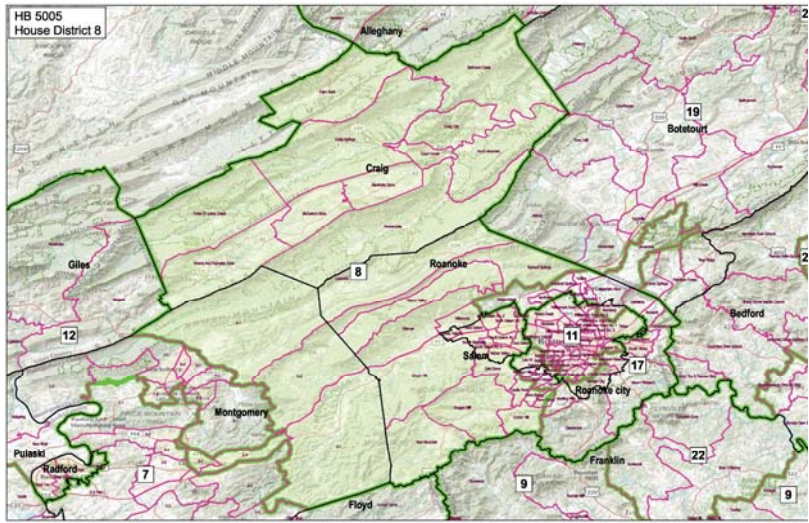
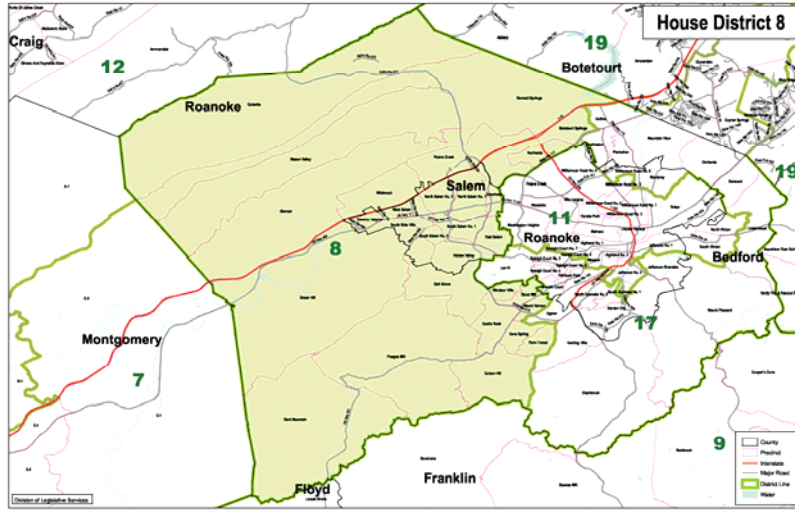


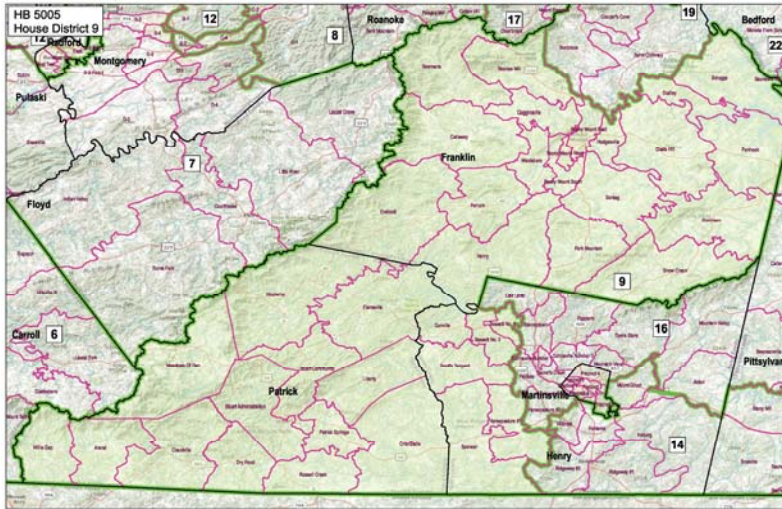
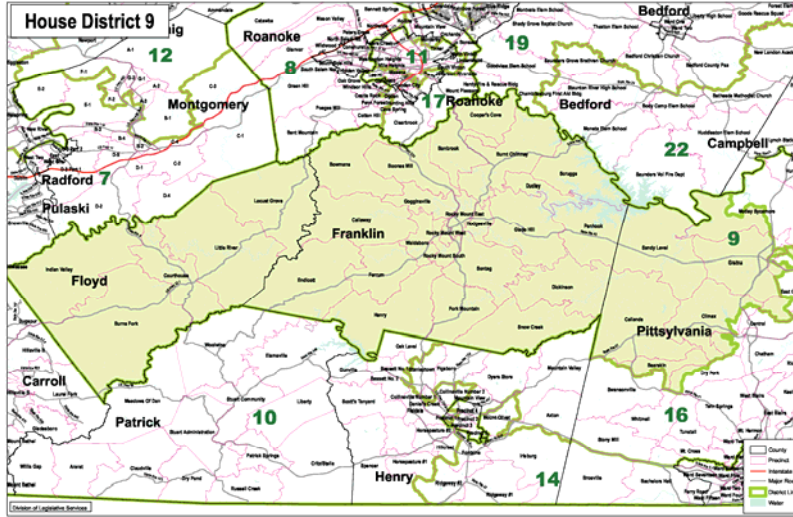




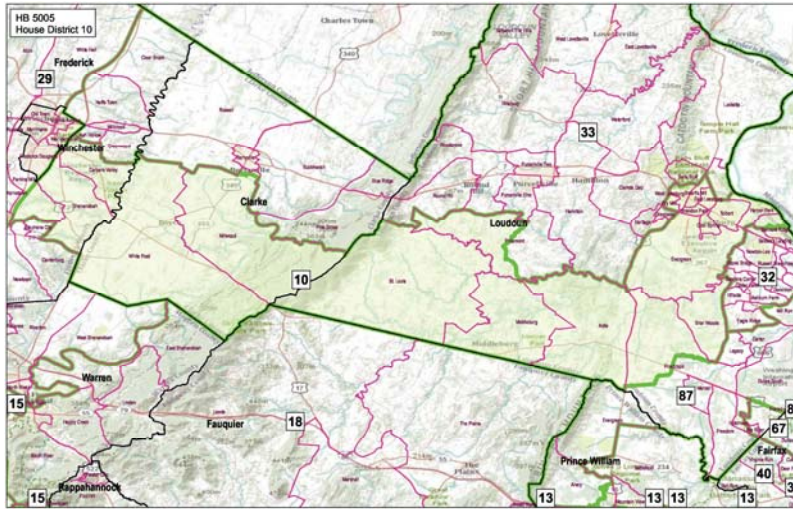
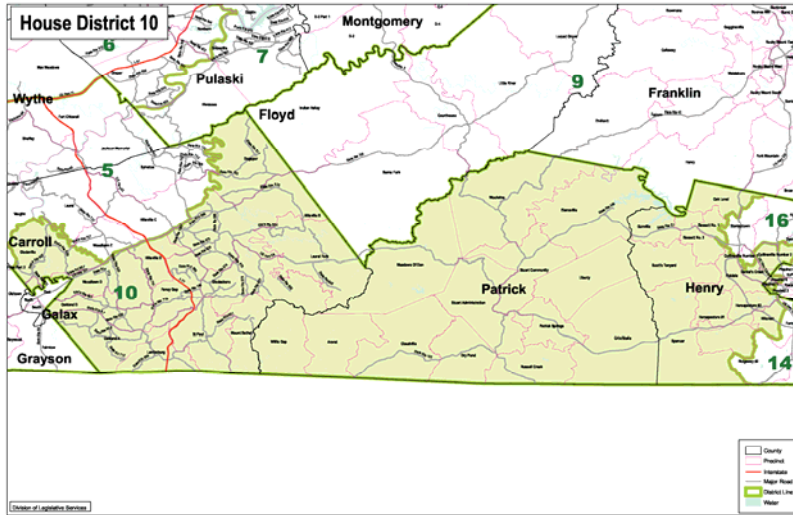


JA 1323

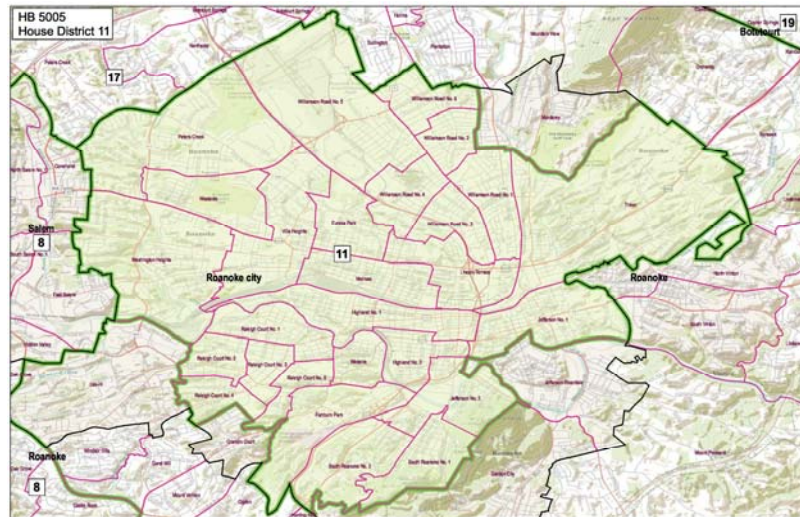
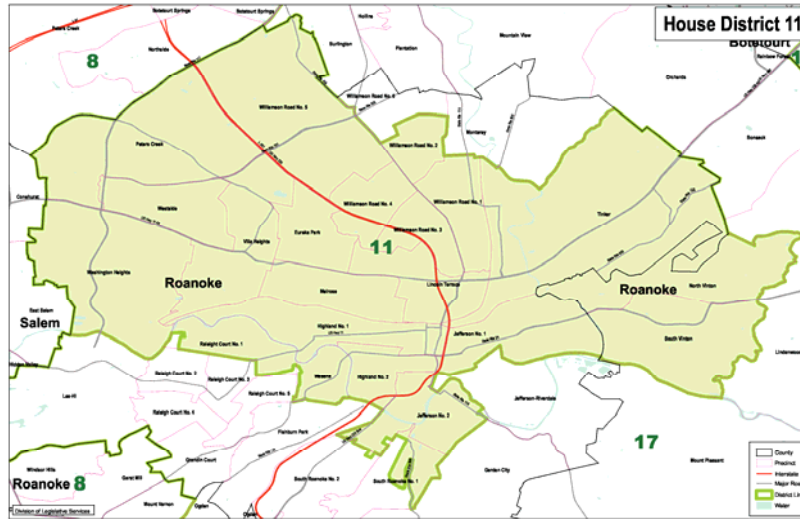


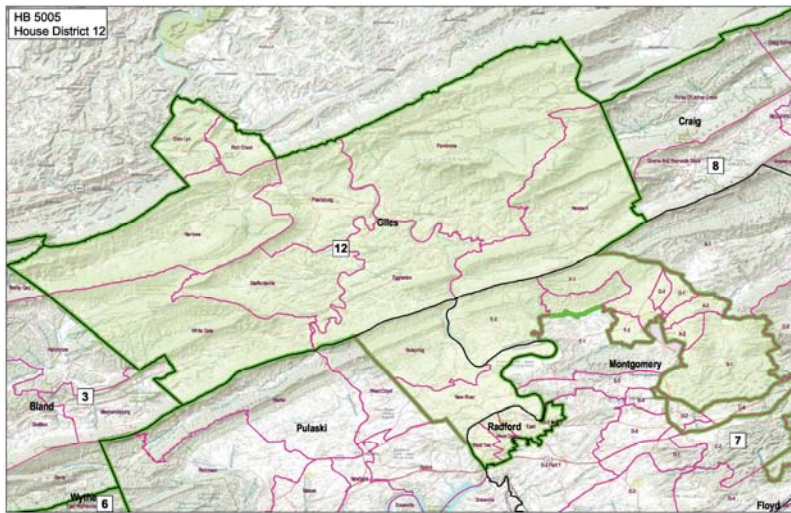
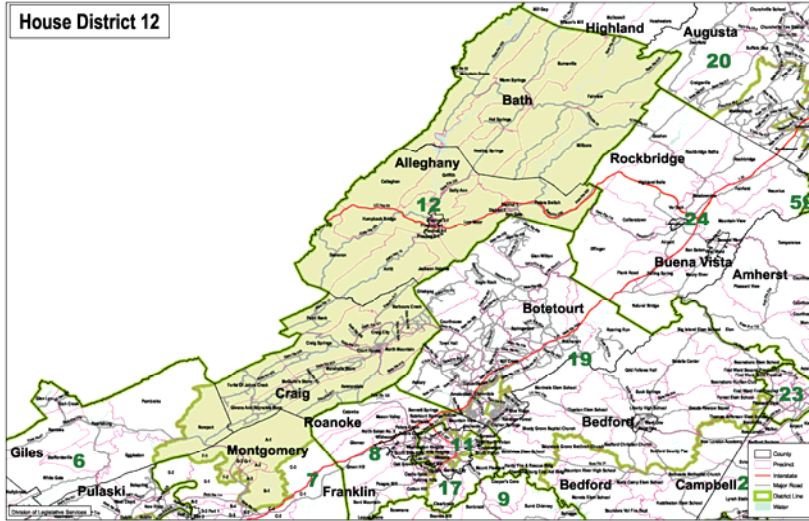




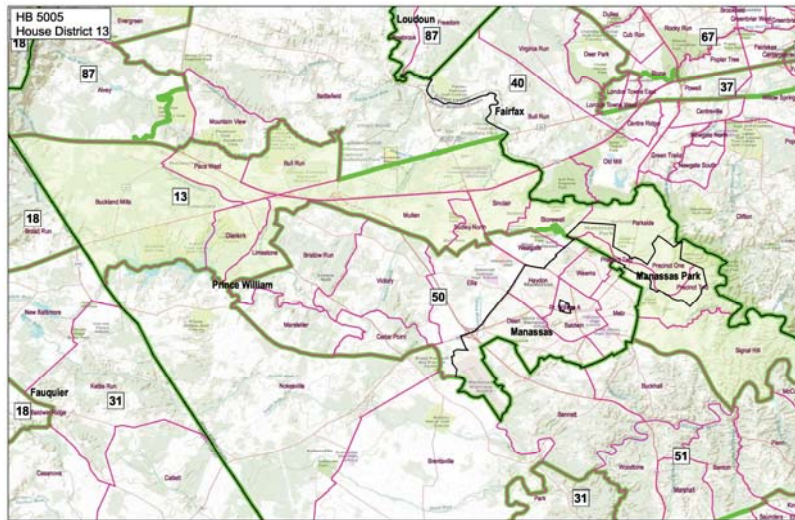
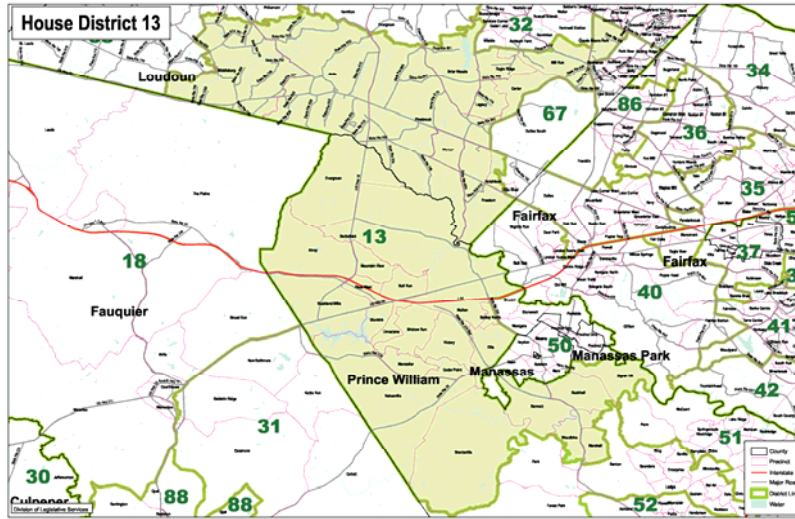


JA 1326

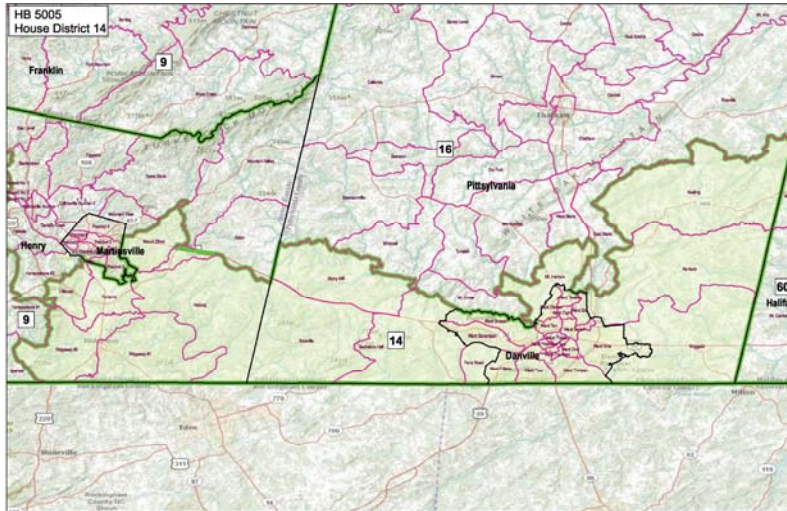
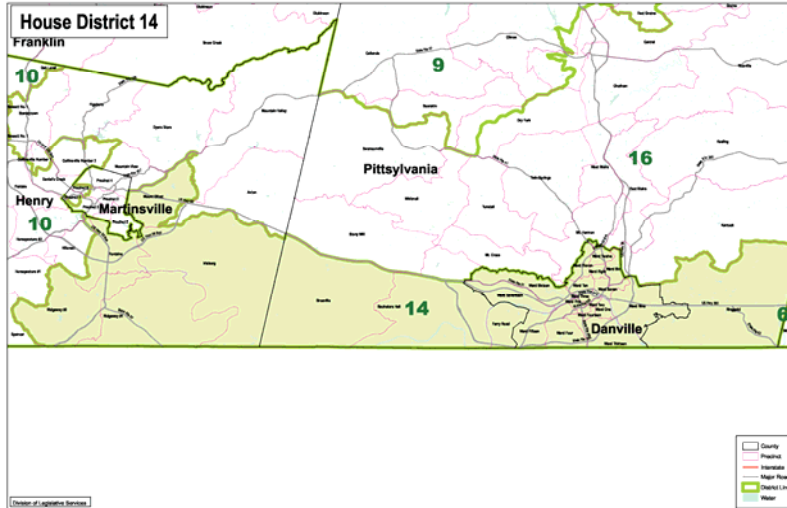




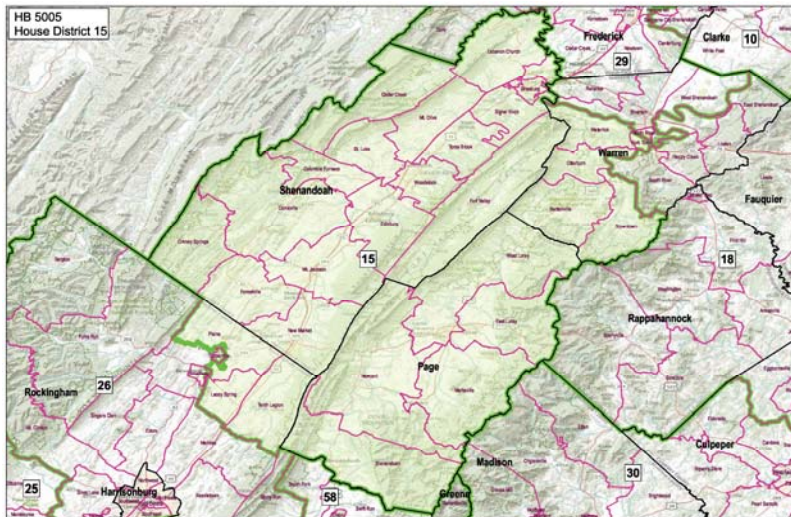
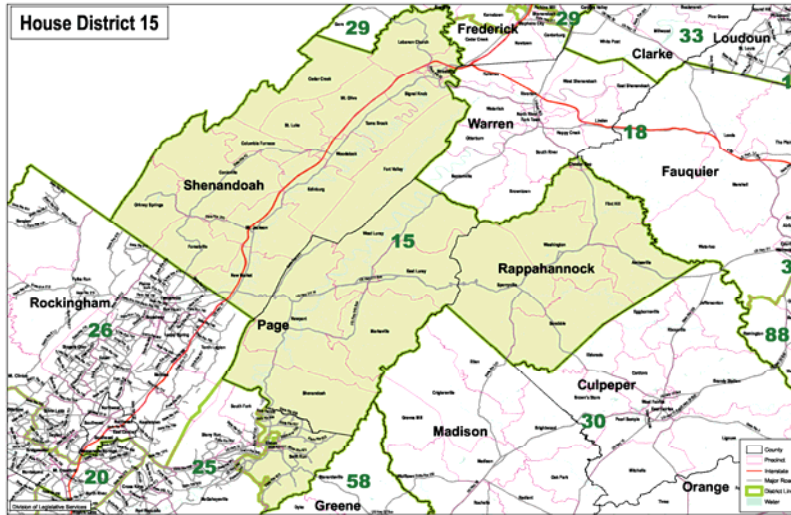




JA 1329

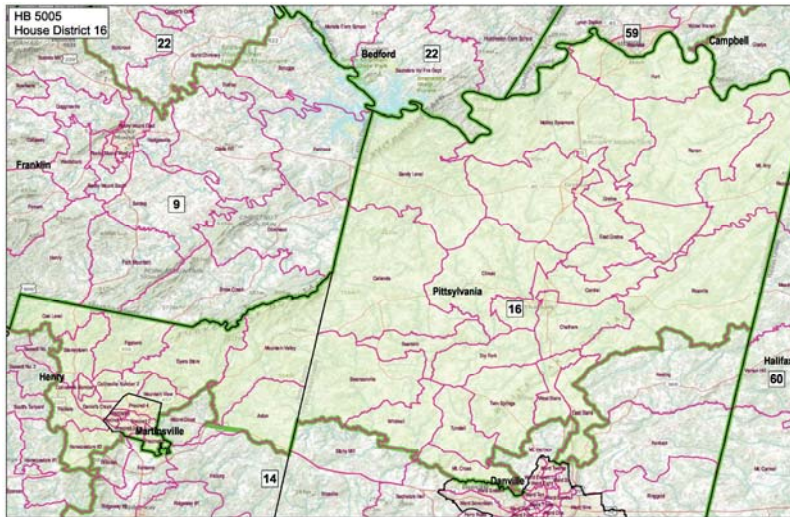
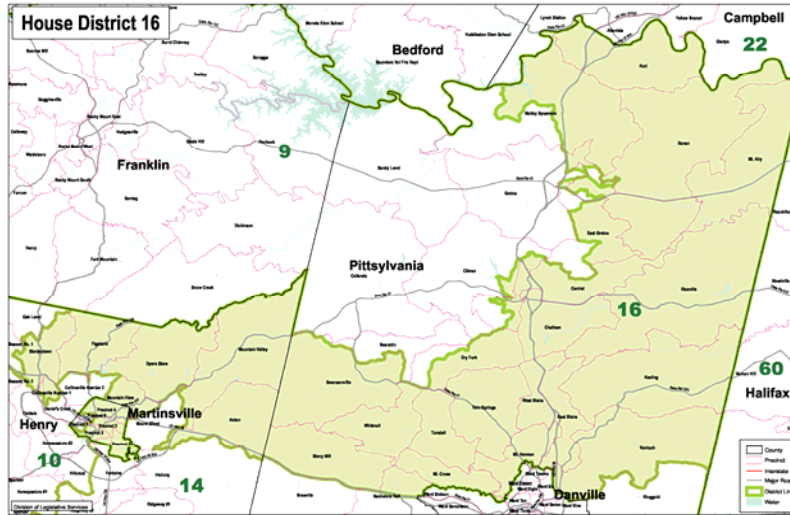


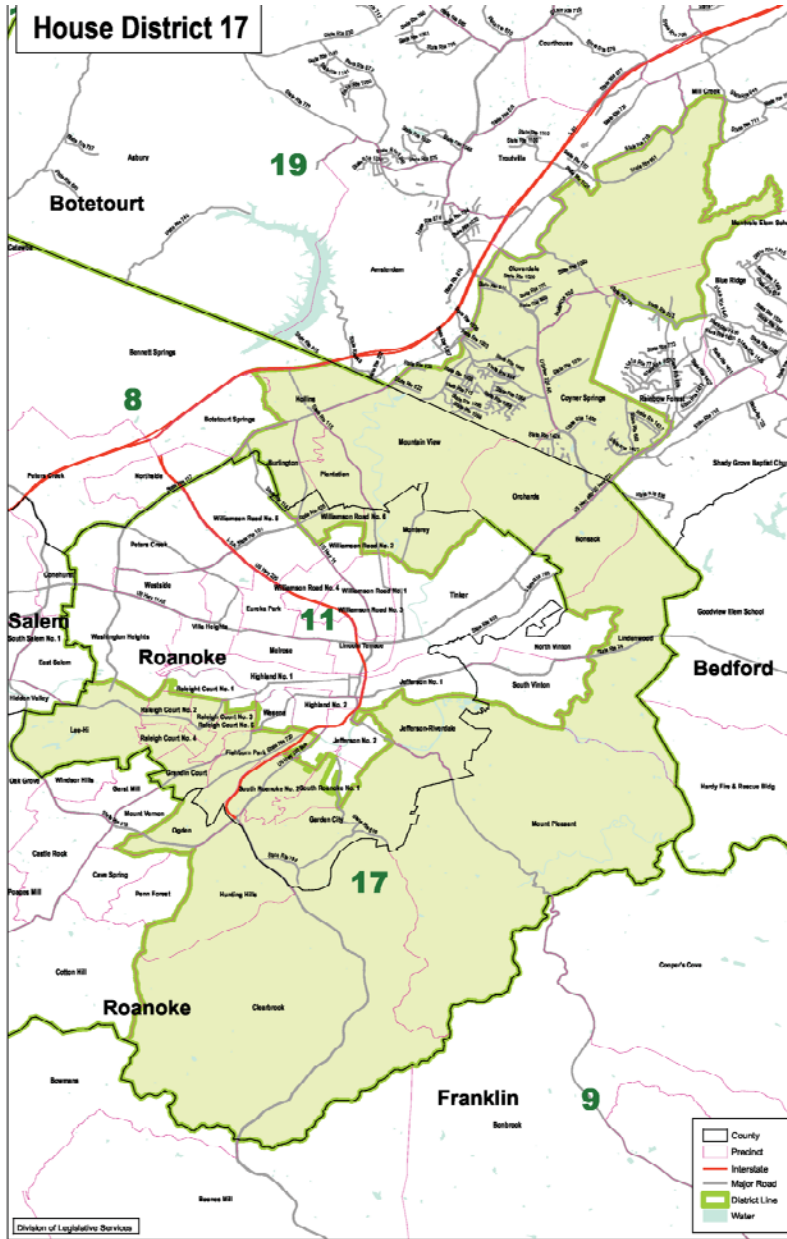
JA 1330





JA 1331

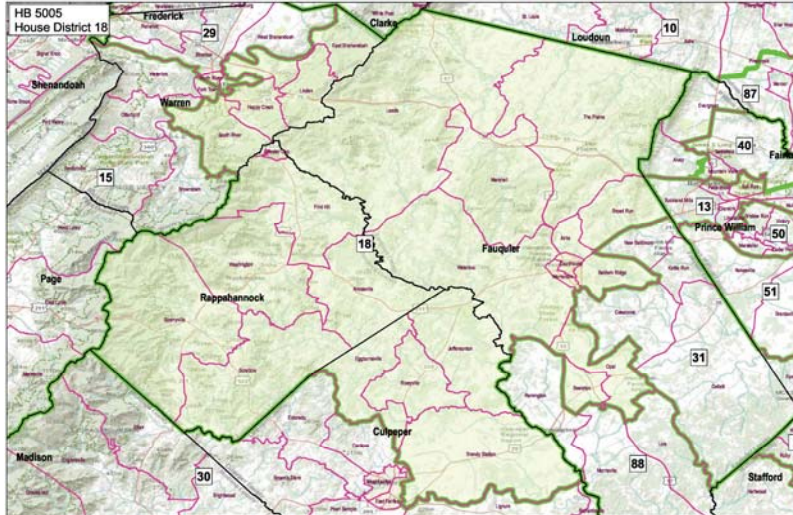
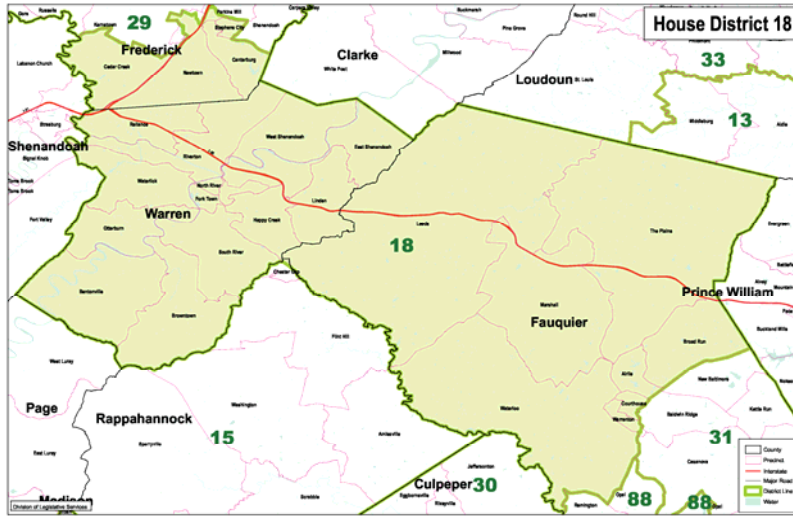




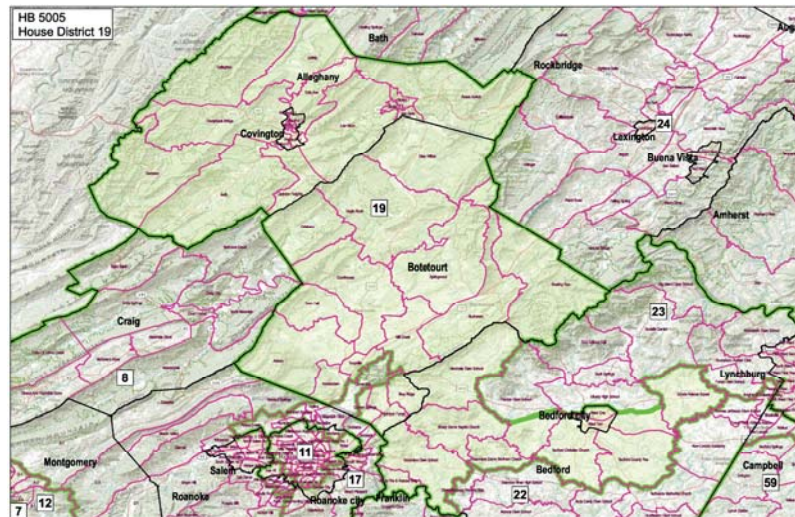
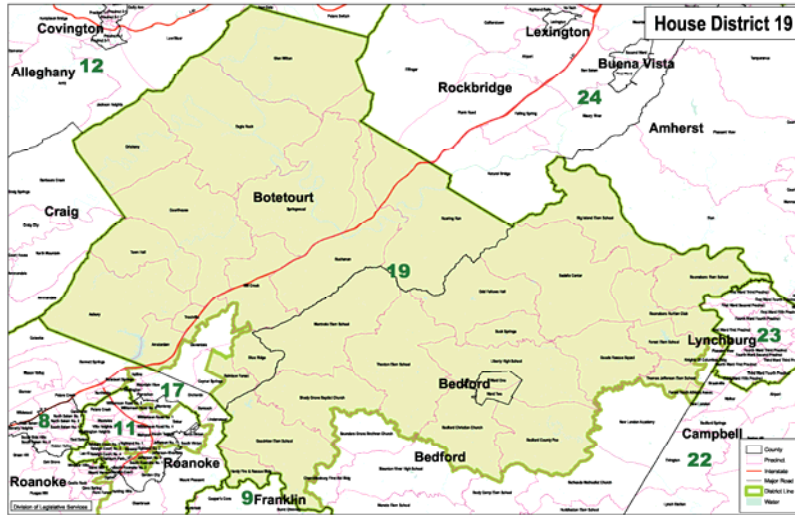




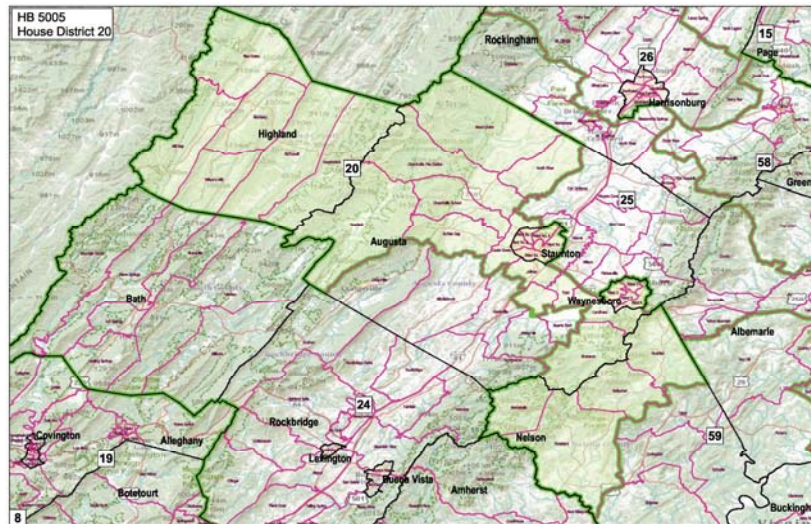
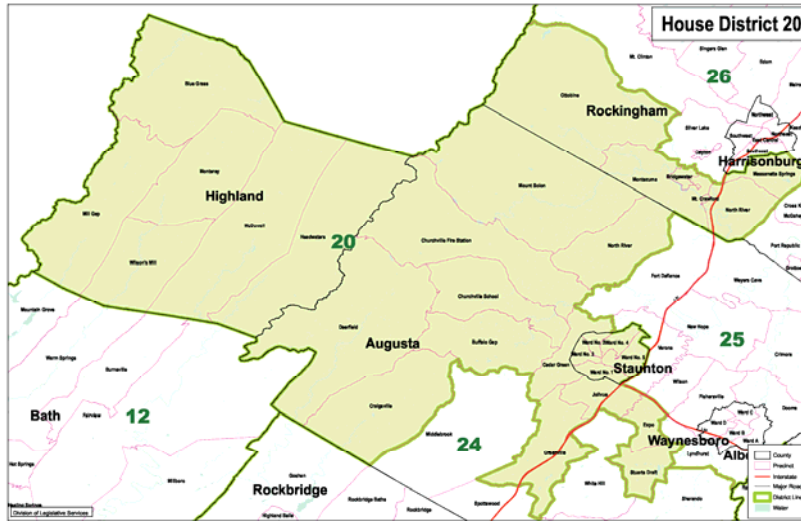
JA 1334

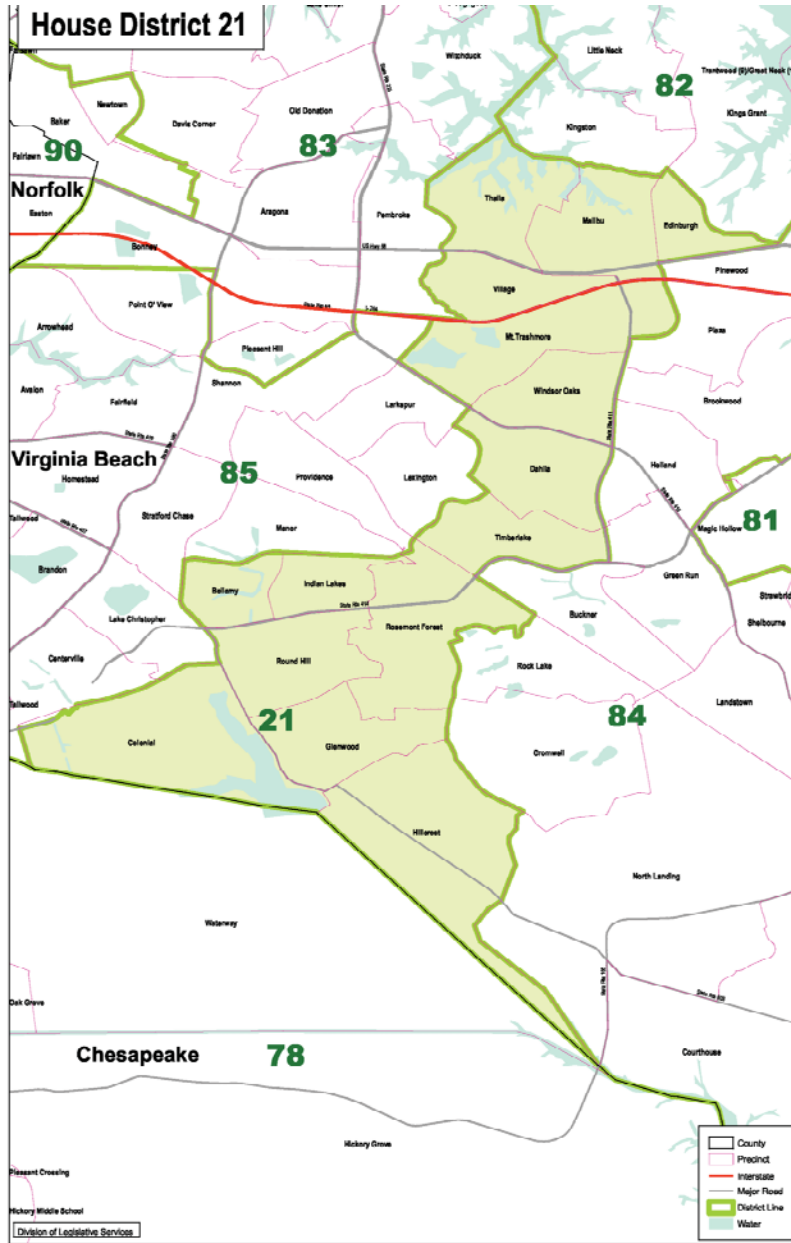


JA 1335



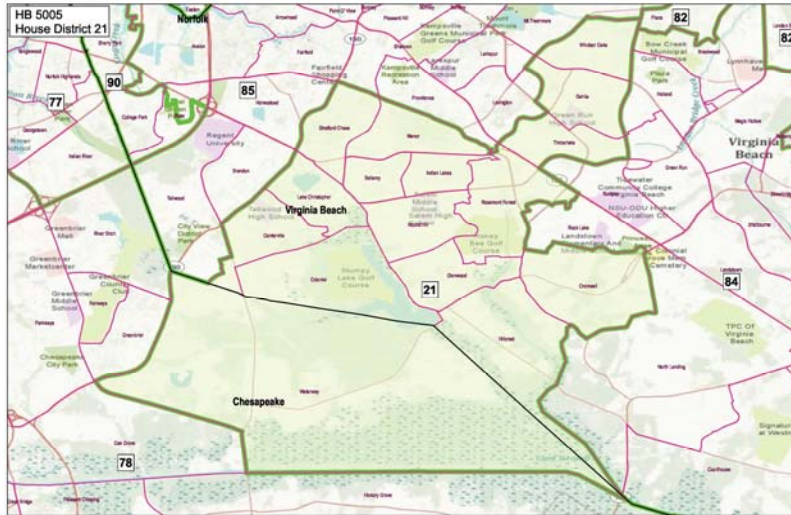
JA 1336

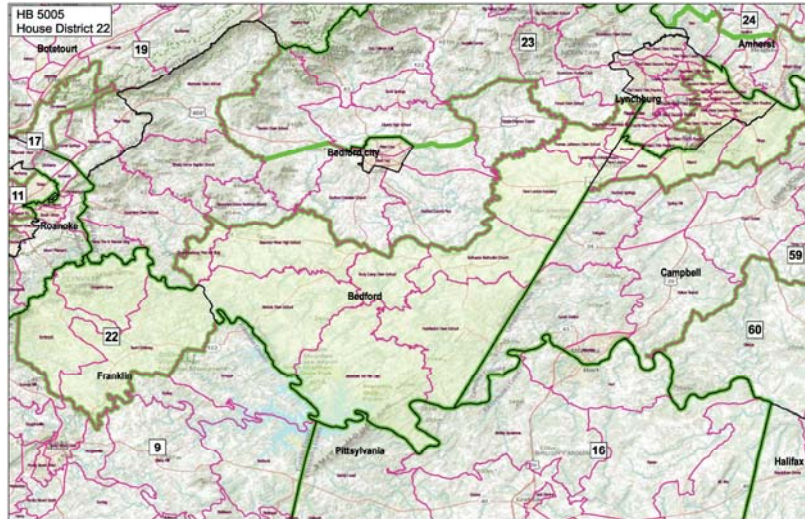
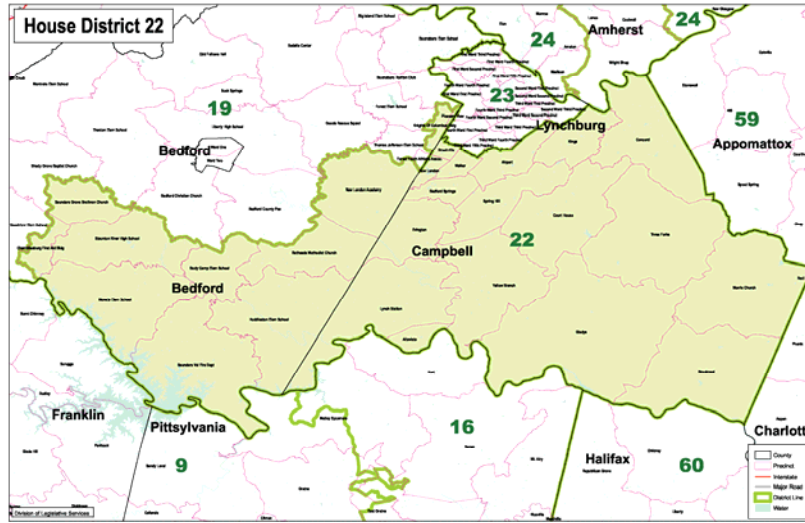




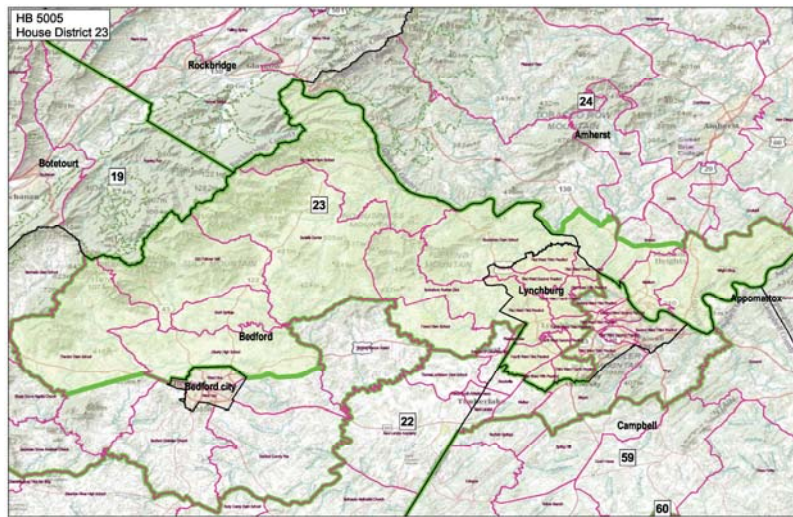
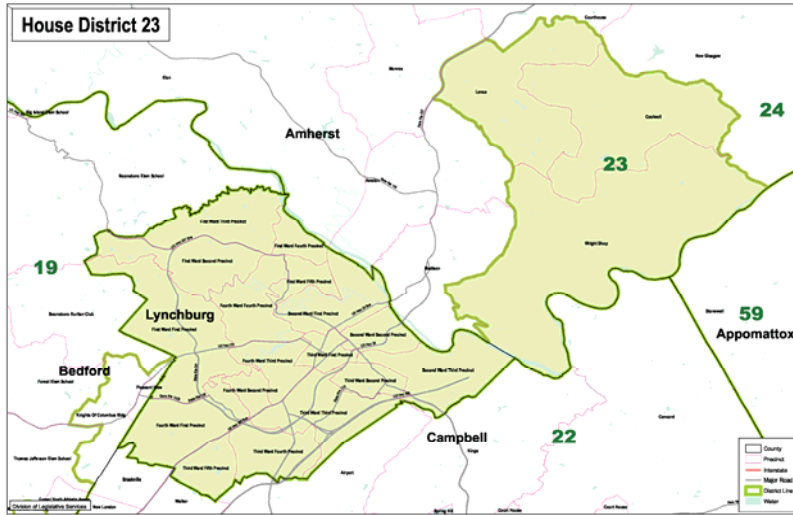


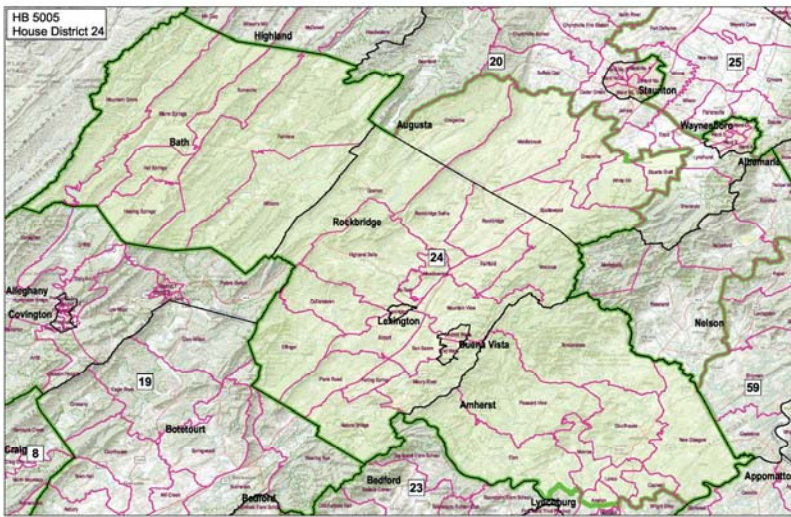
JA 1338





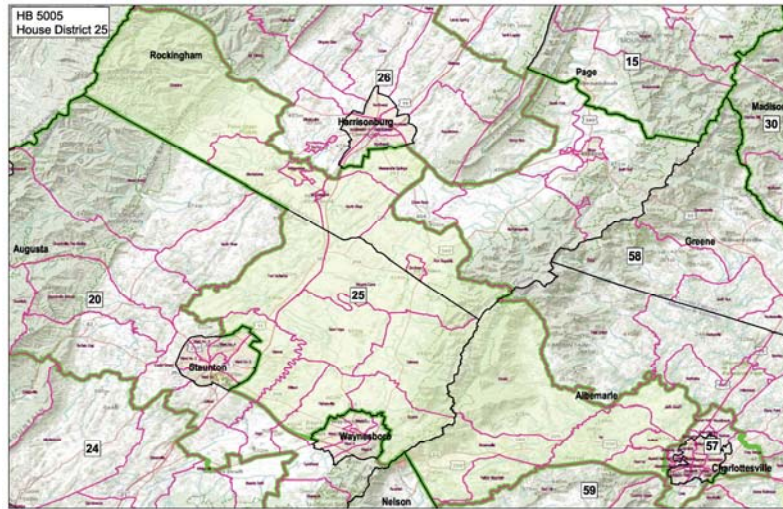
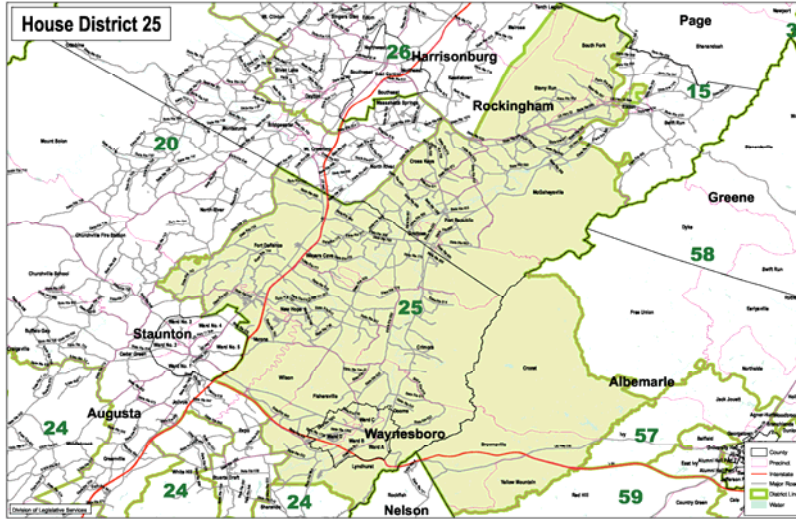
JA 1340



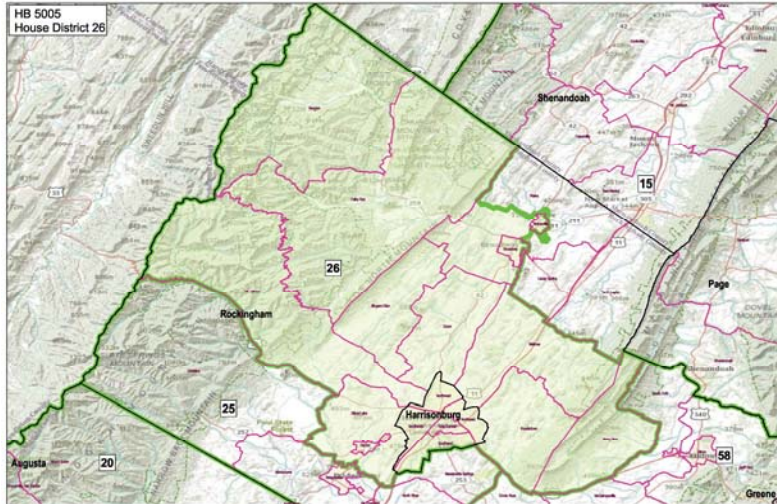
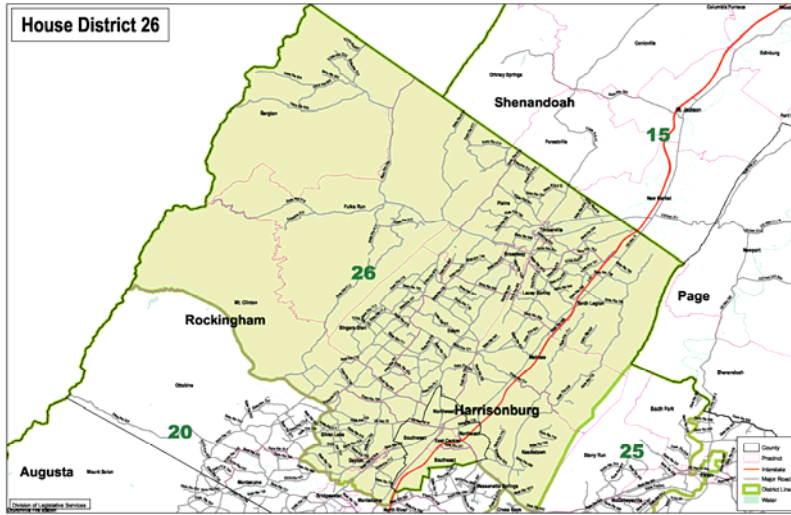




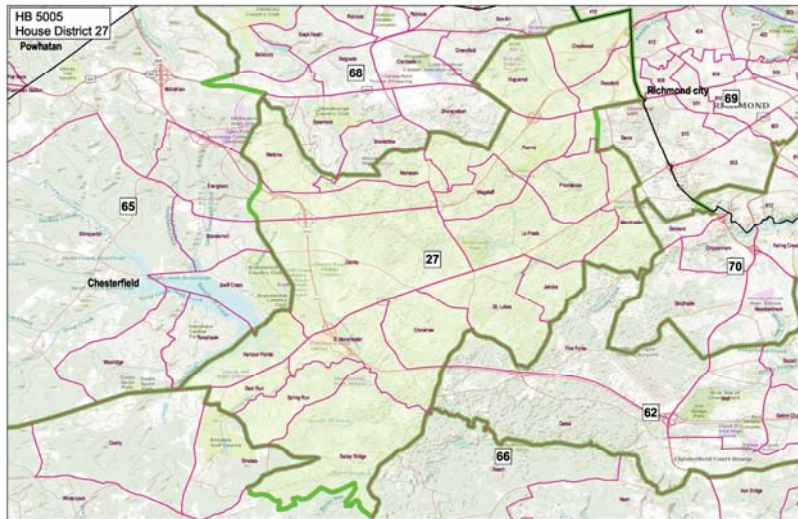
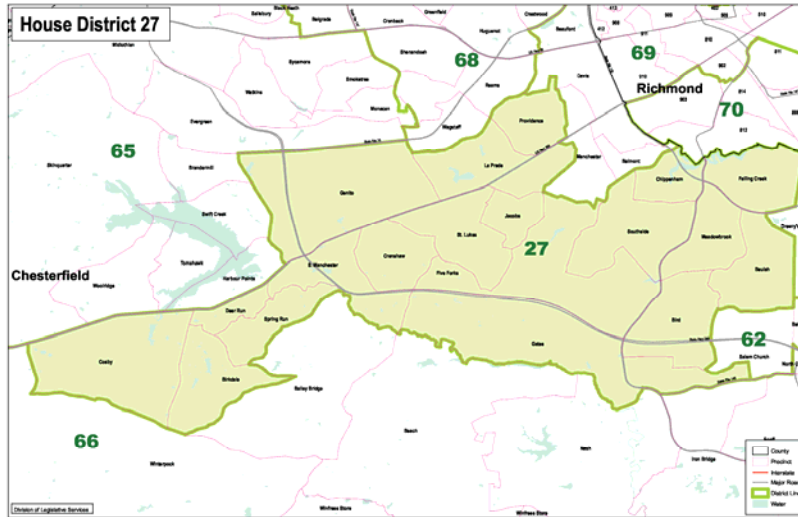
JA 1342



JA 1343



JA 1344



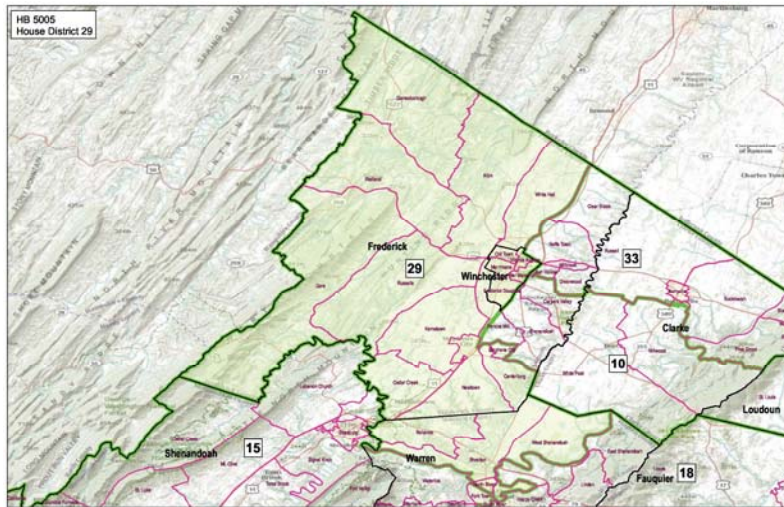
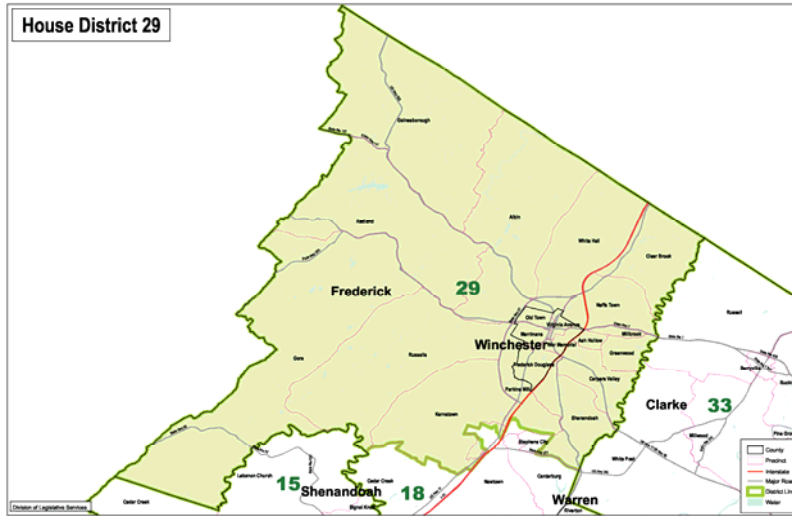




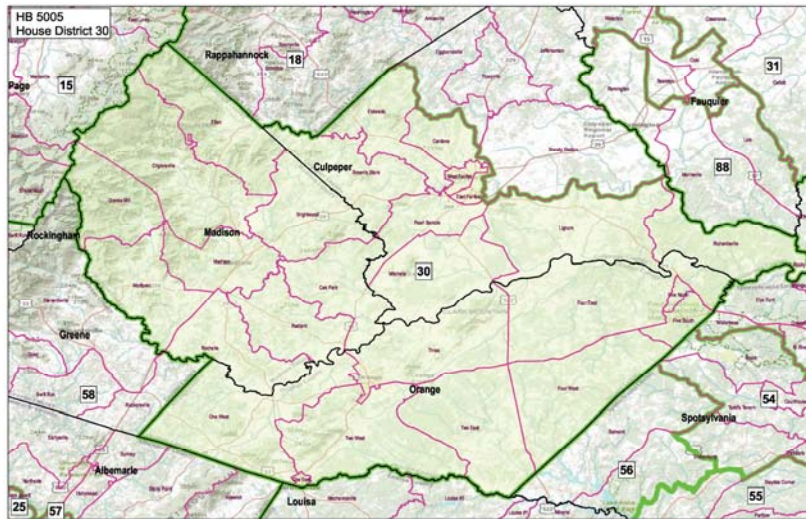
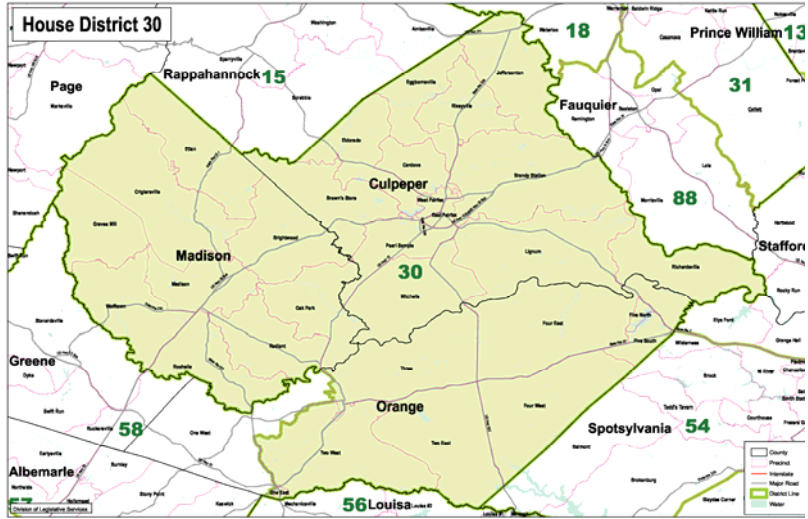




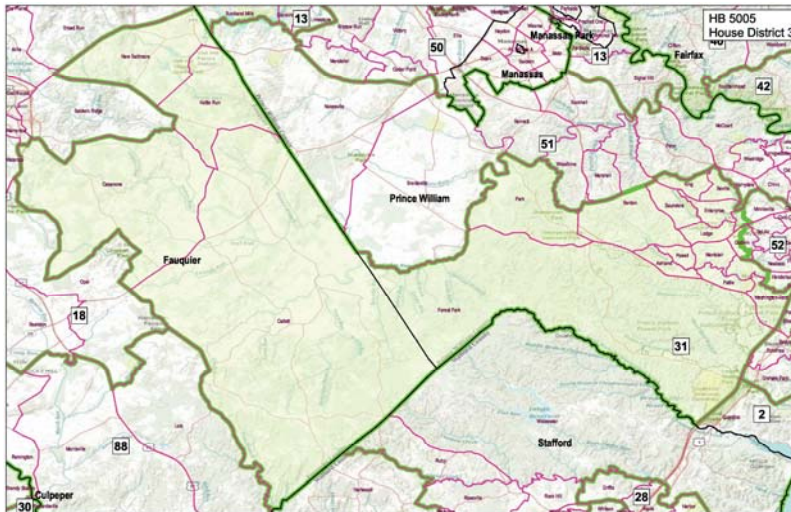
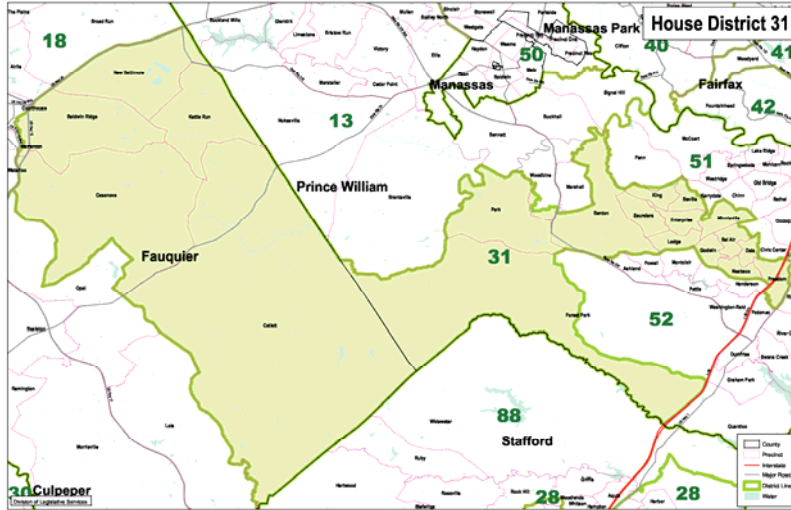
JA 1347



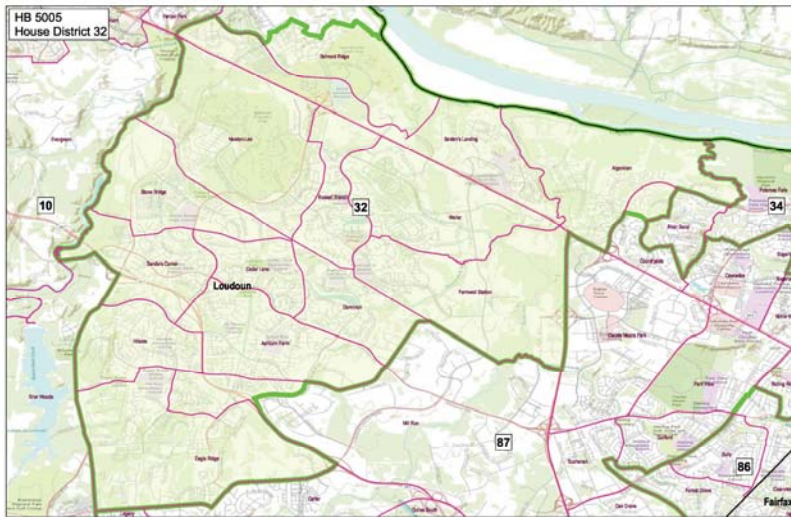
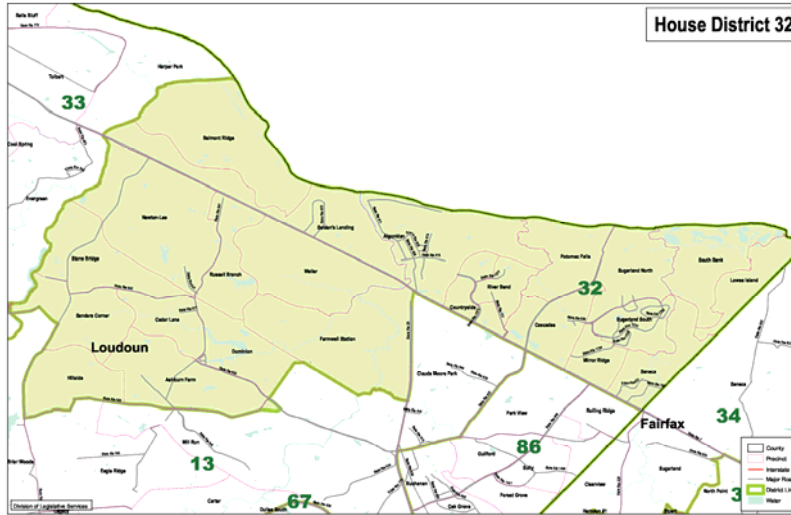
JA 1348



JA 1349

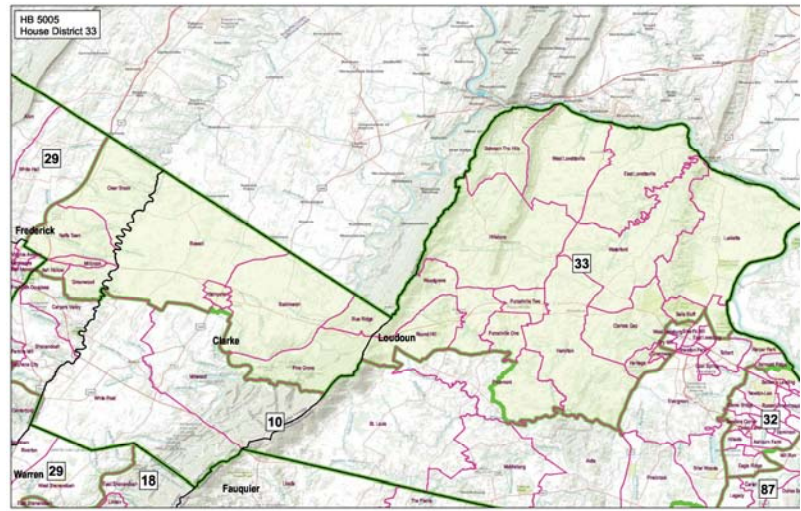
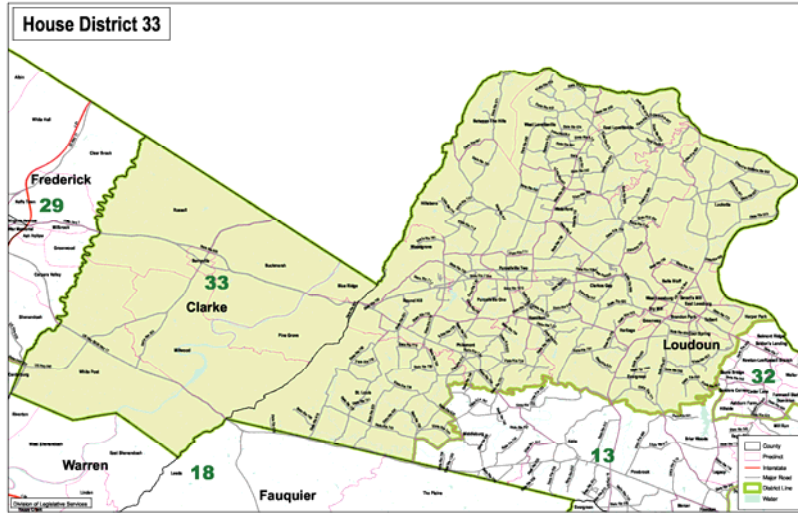


JA 1350



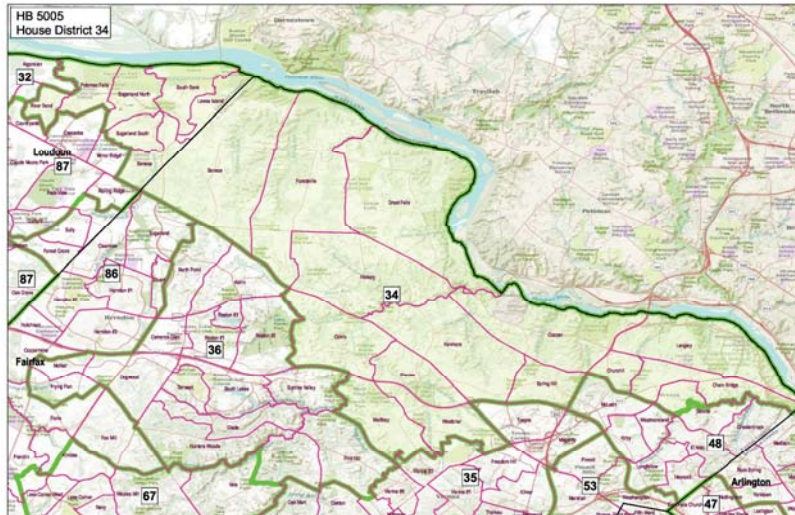
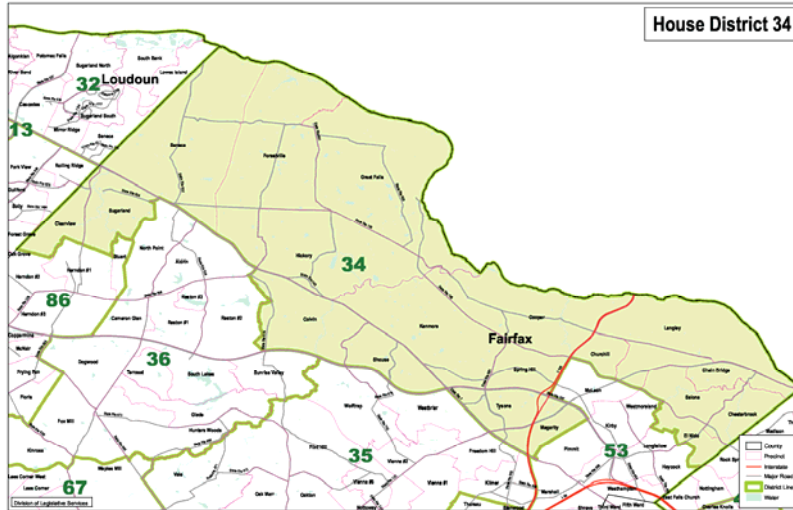


JA 1351

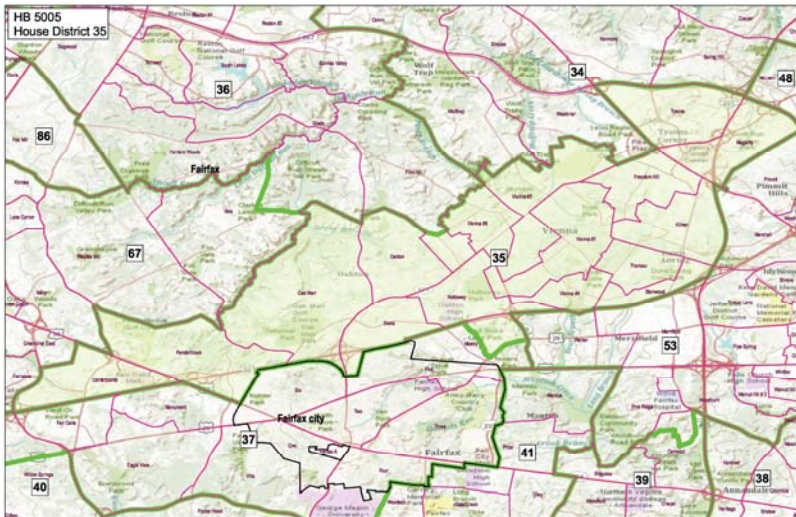
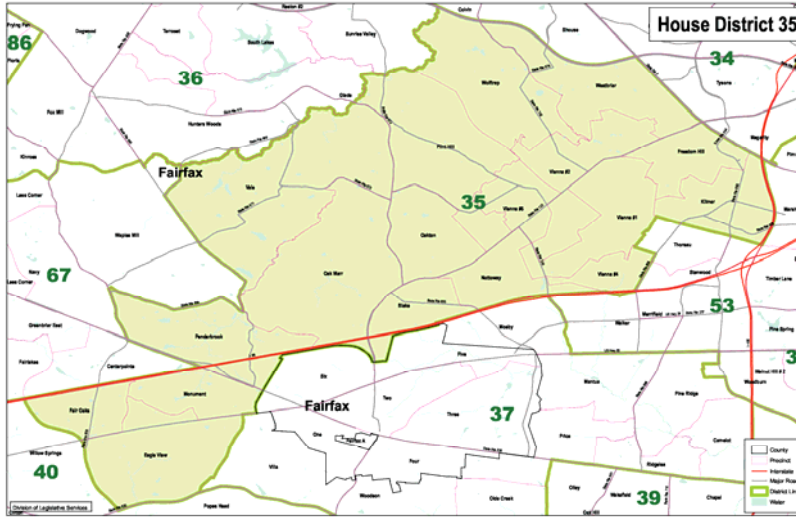




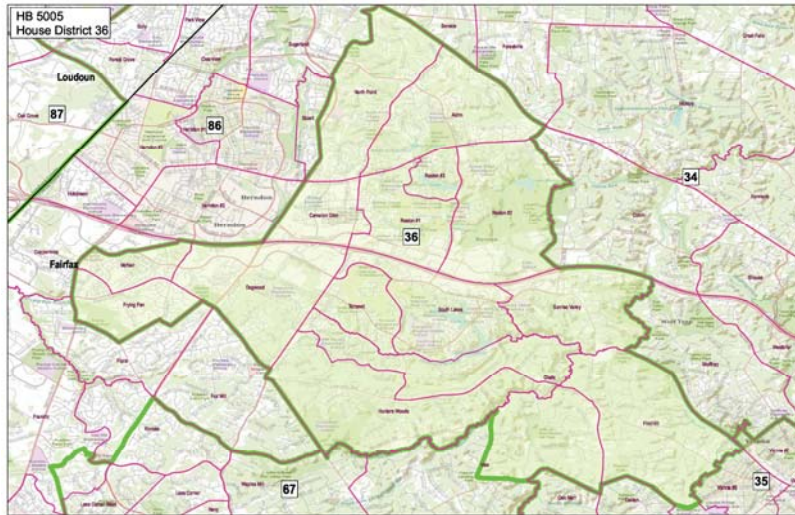
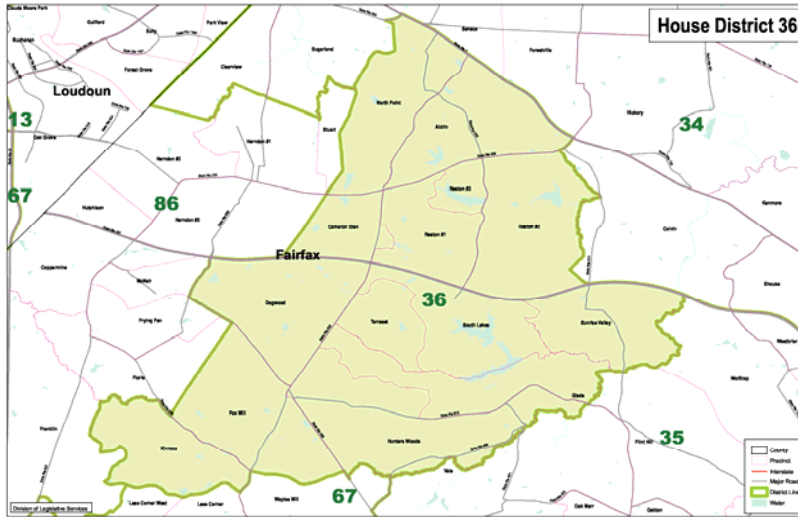
JA 1352



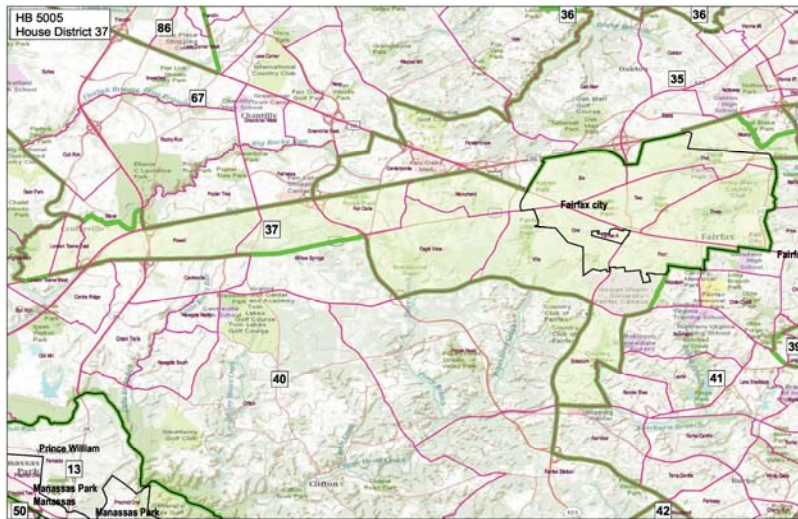
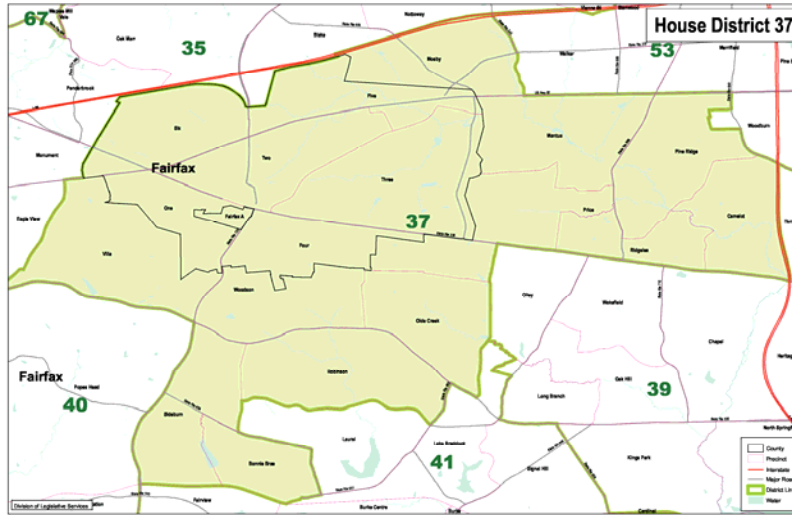
JA 1353



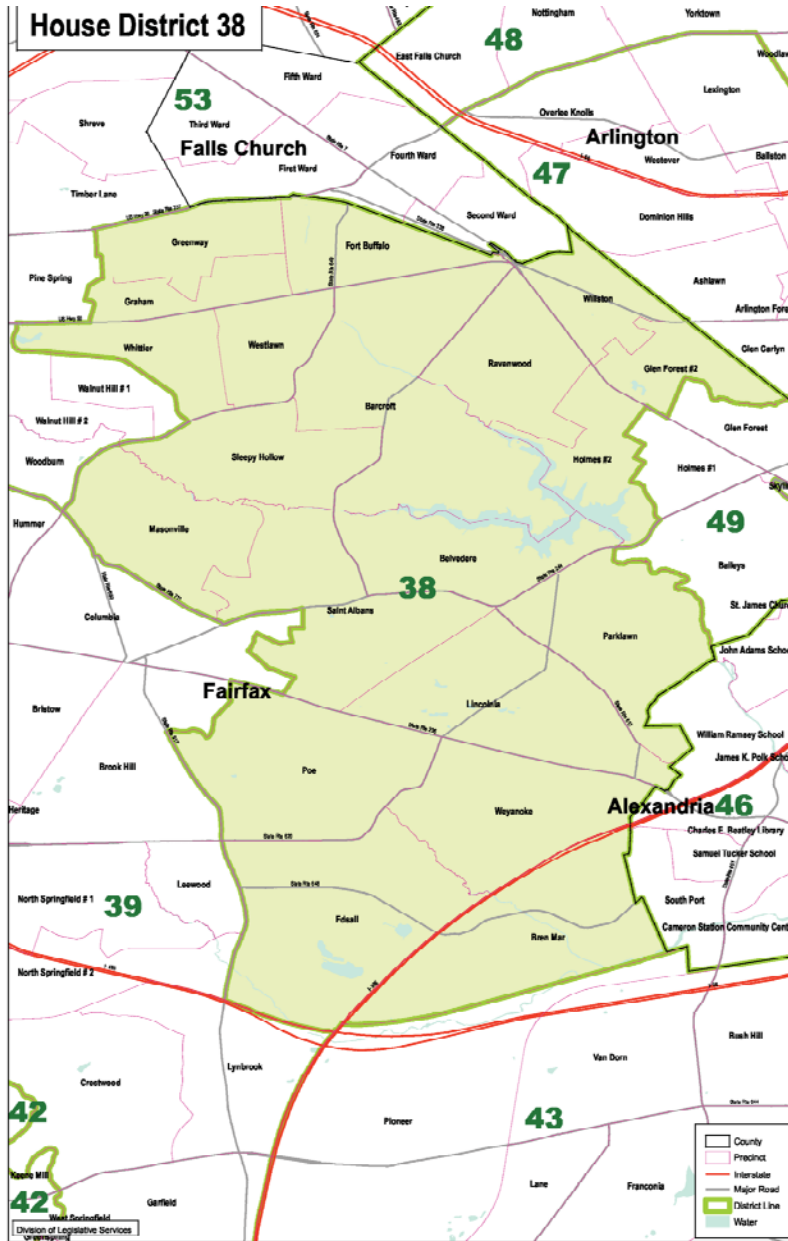
JA 1354



JA 1355

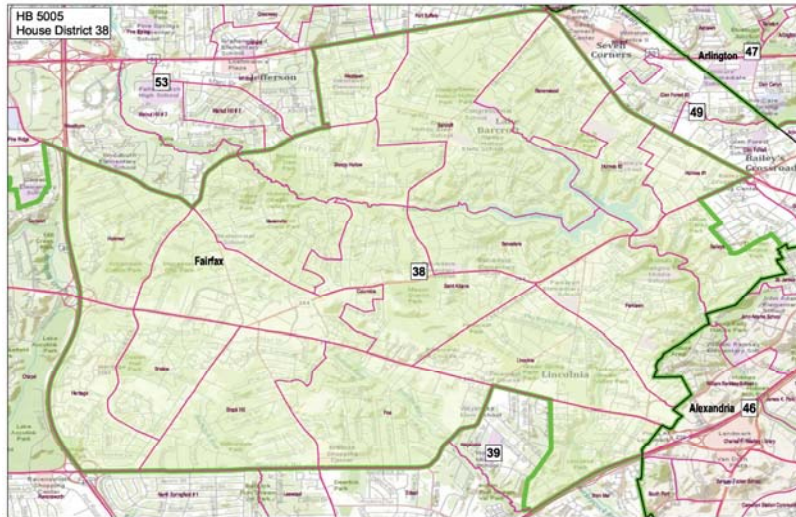


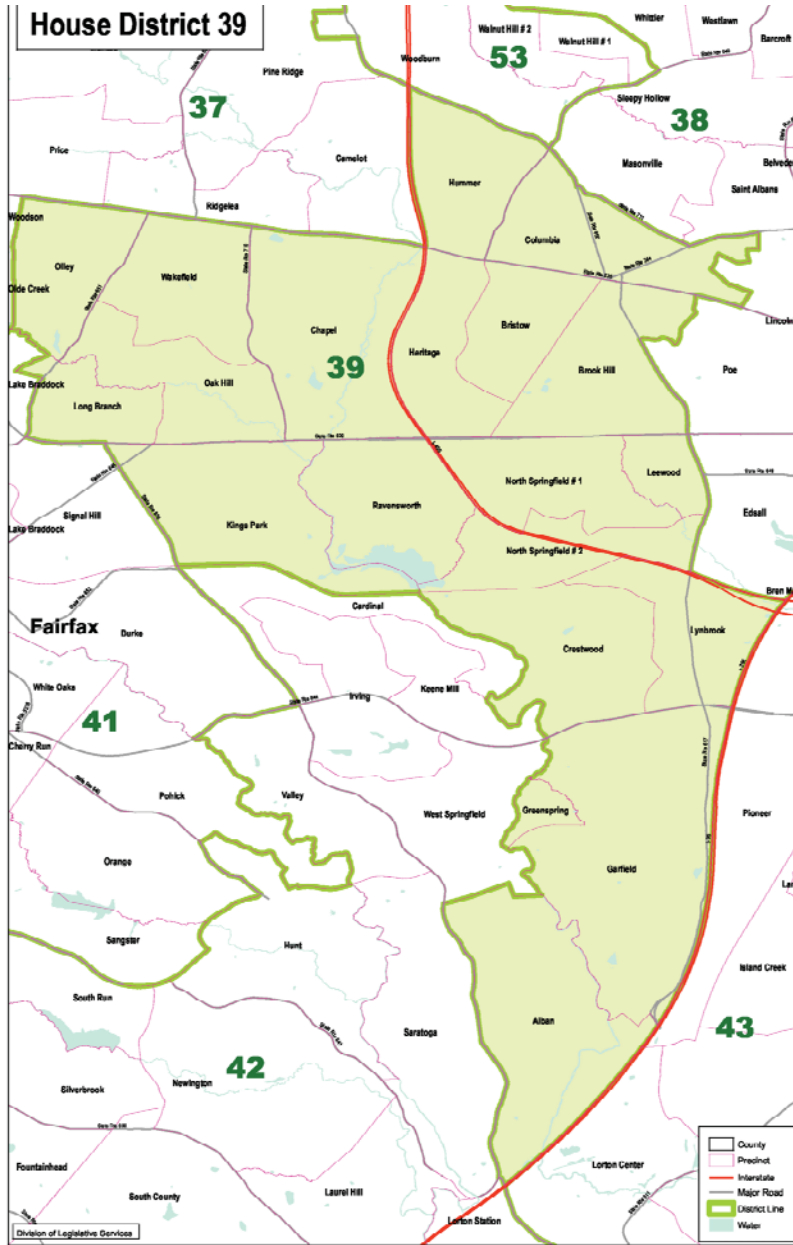




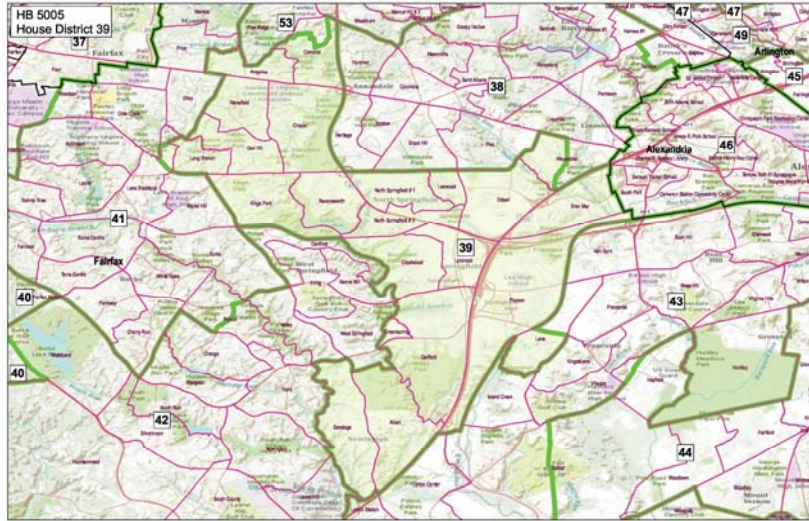


JA 1357

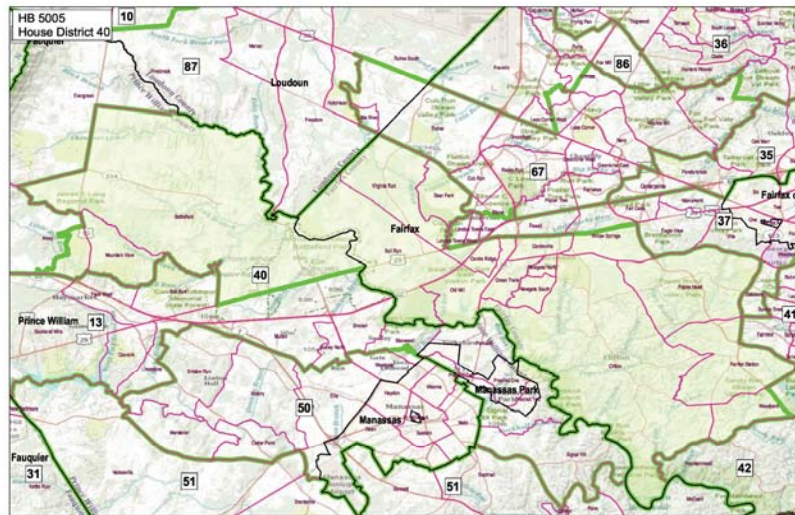
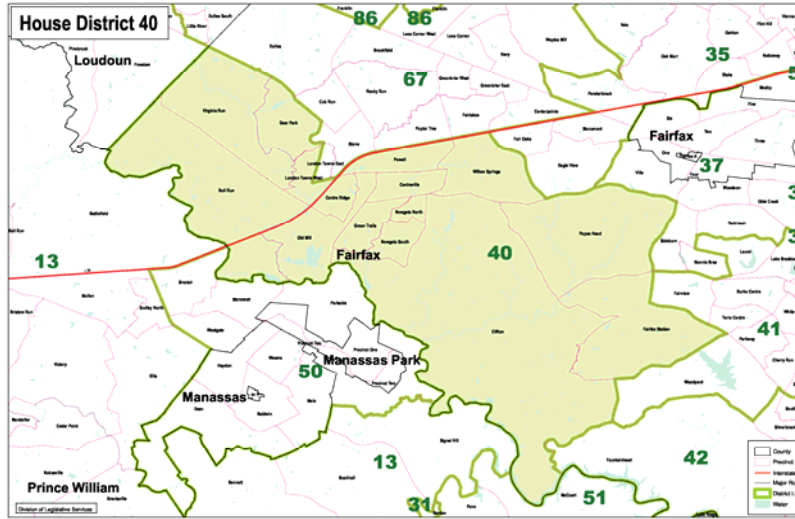




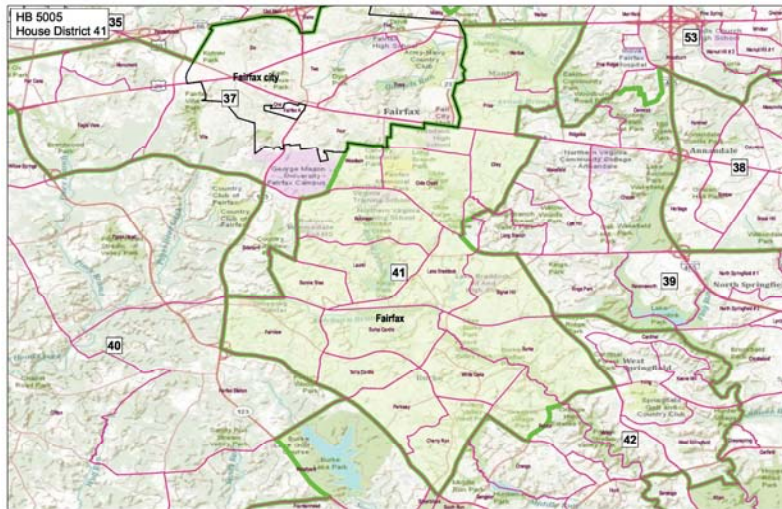
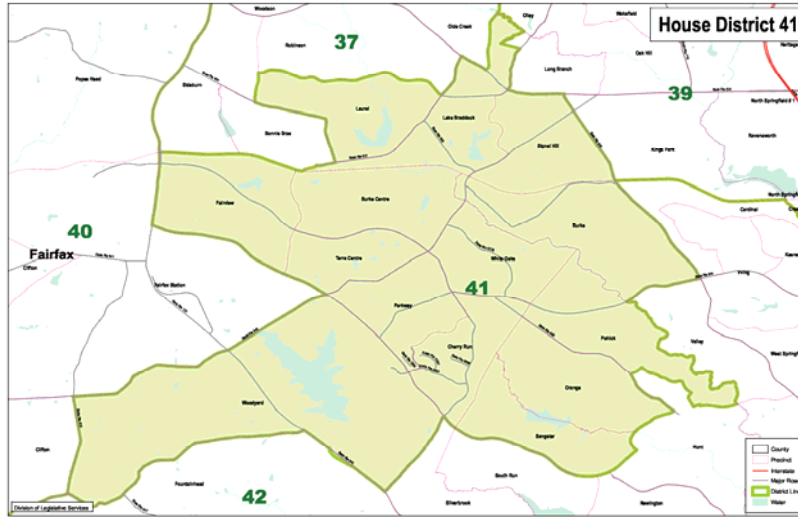
JA 1359



JA 1360

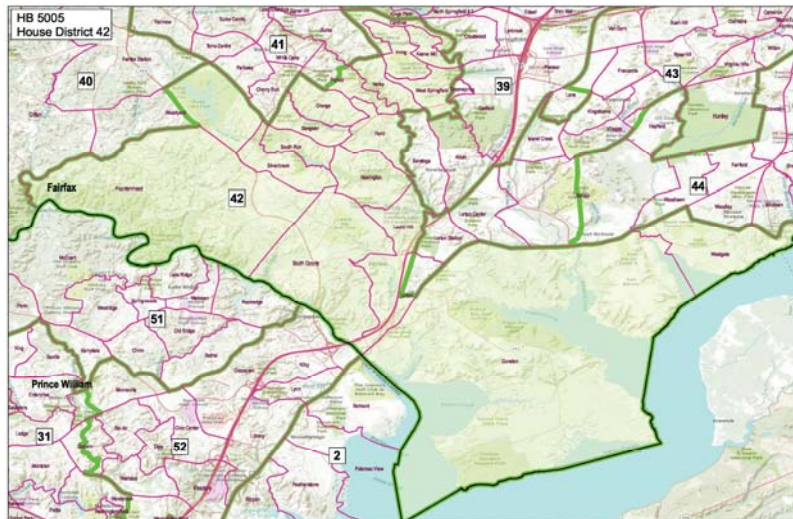
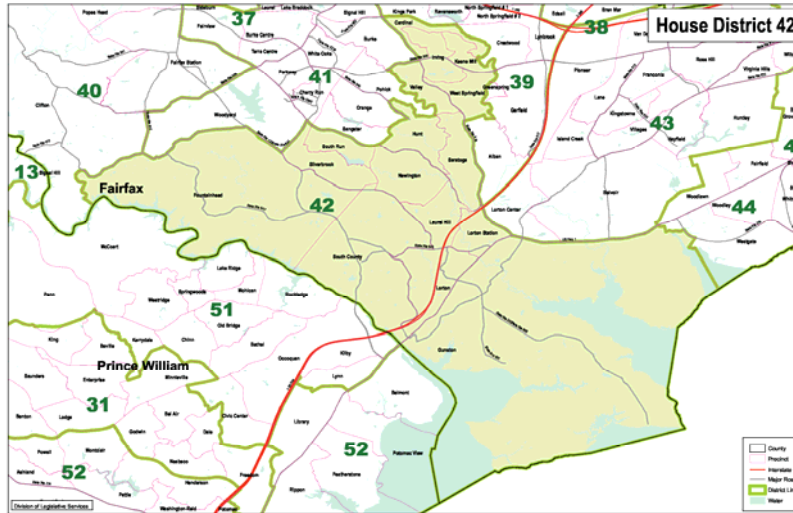


JA 1361

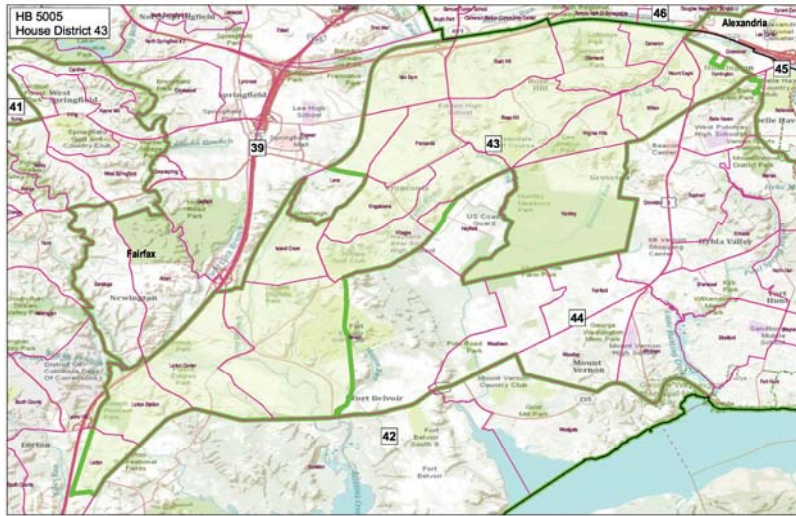
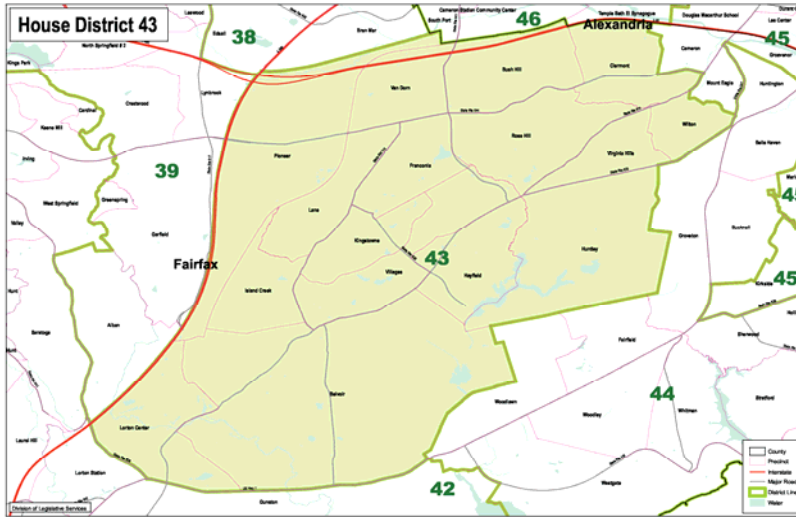




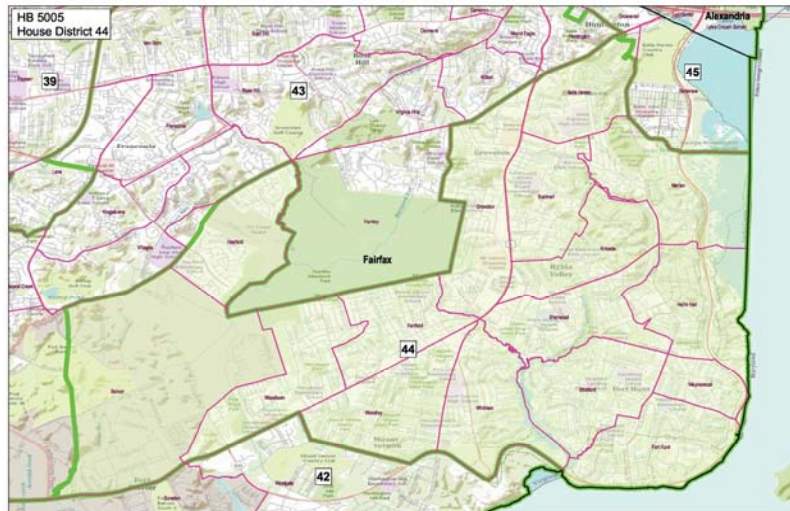
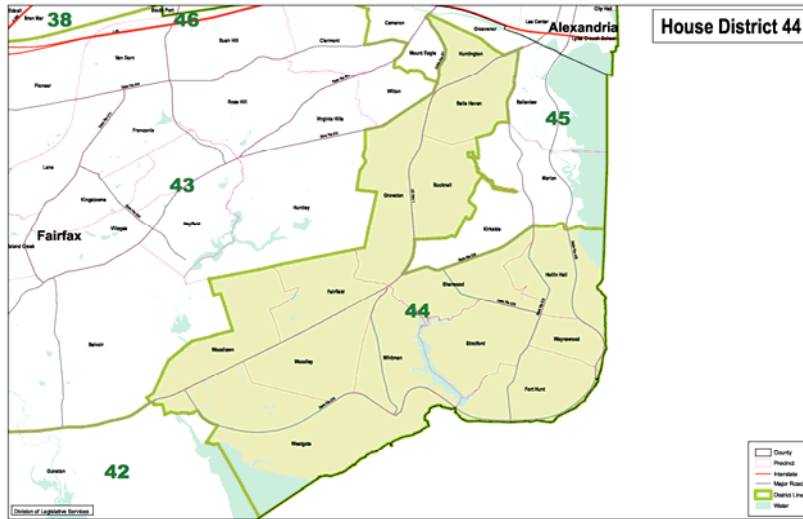
JA 1362

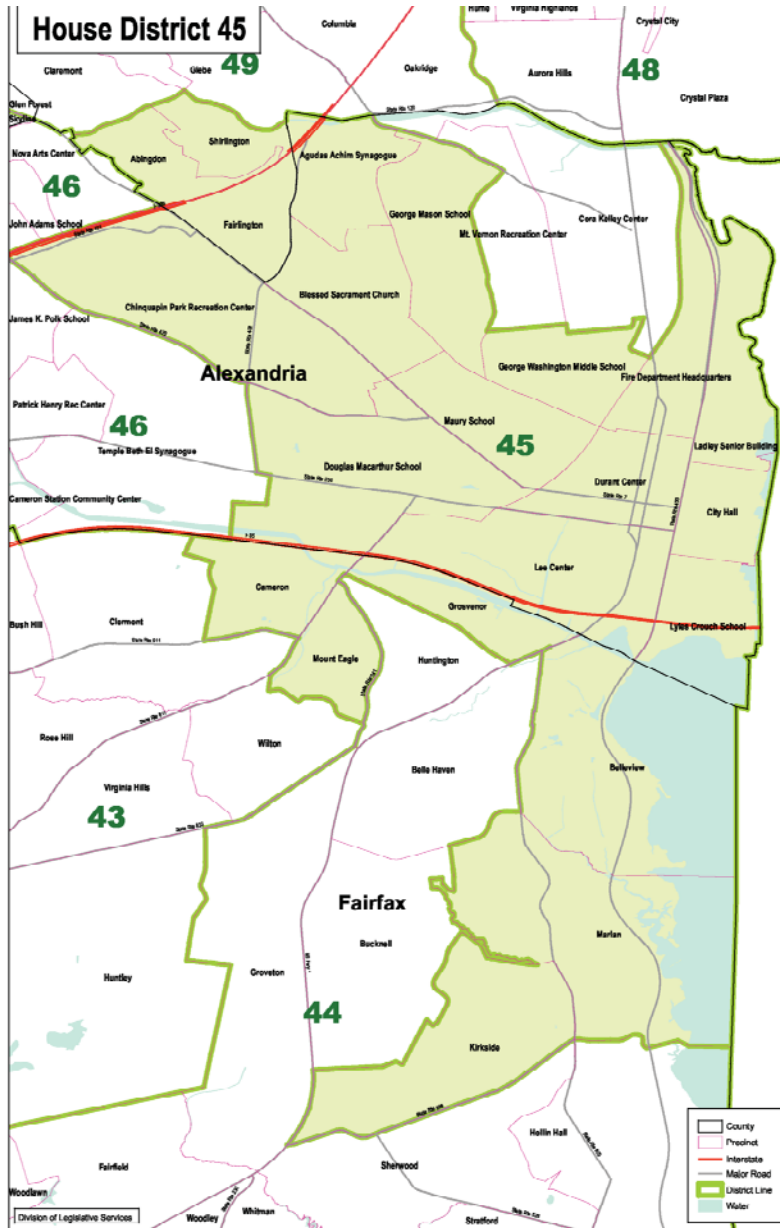


JA 1363



JA 1364



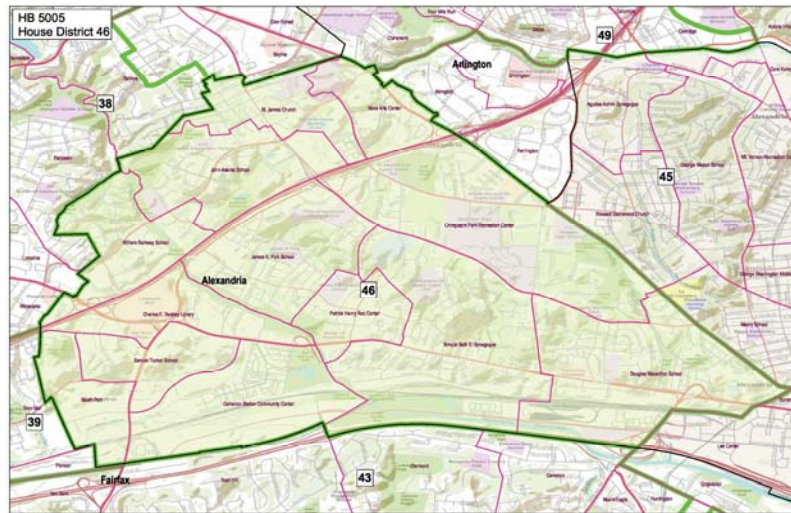
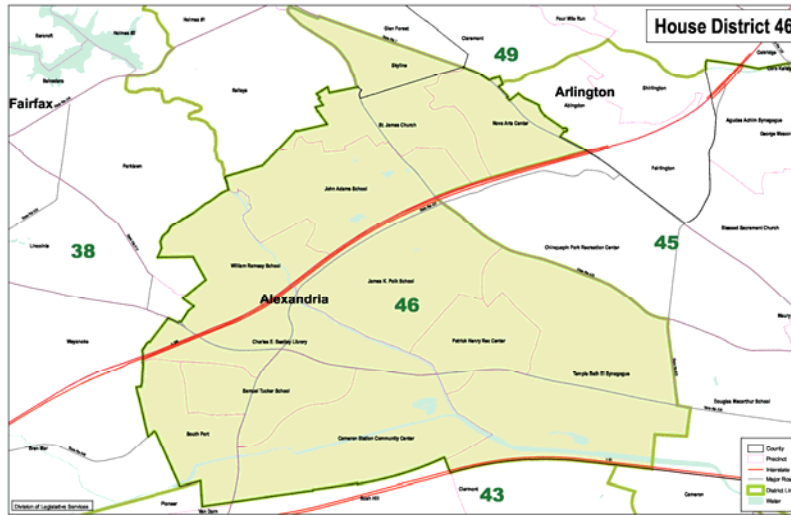




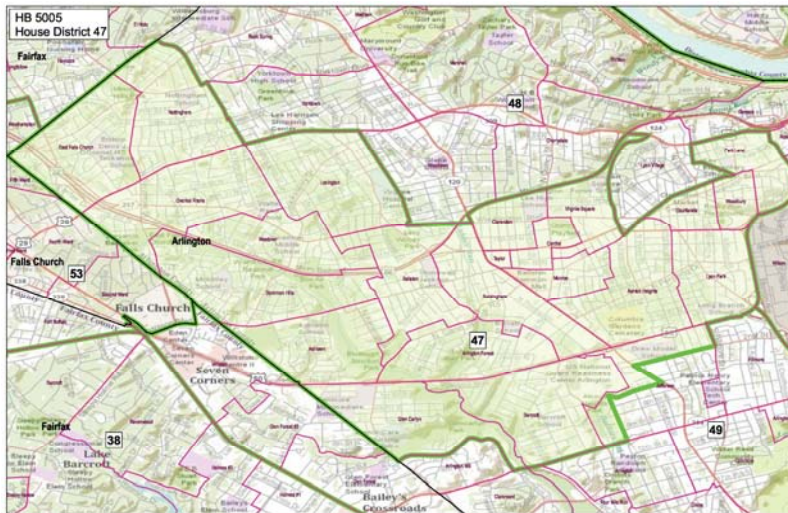
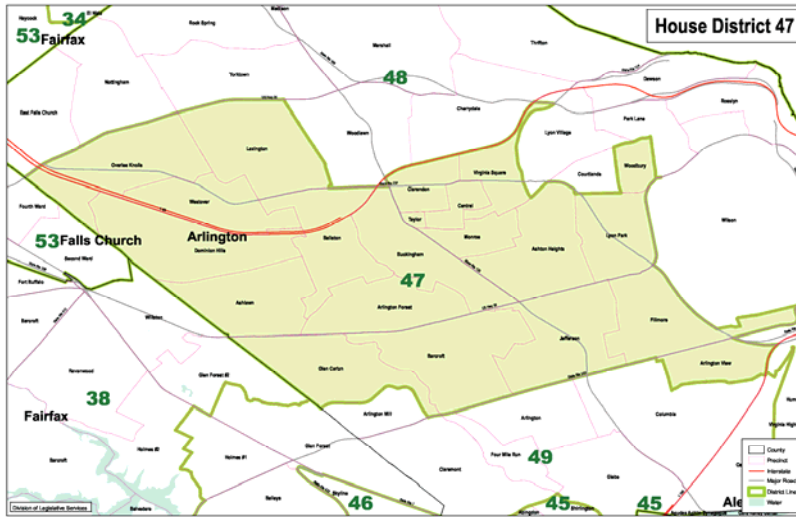




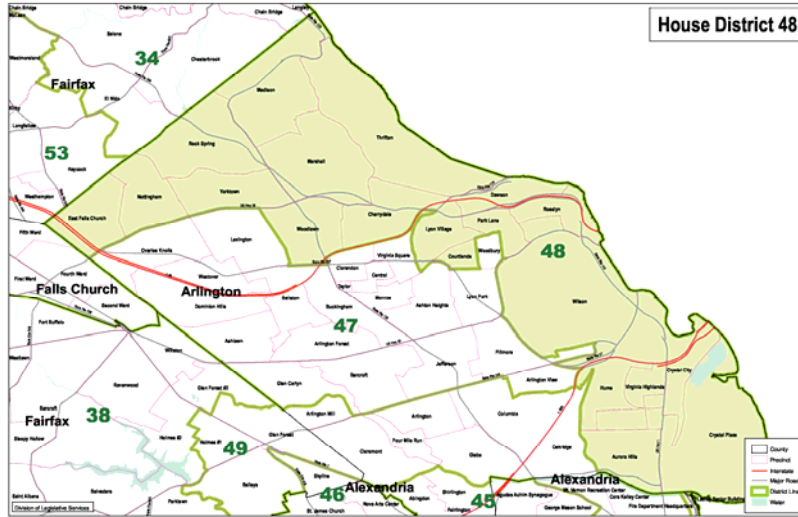
JA 1367

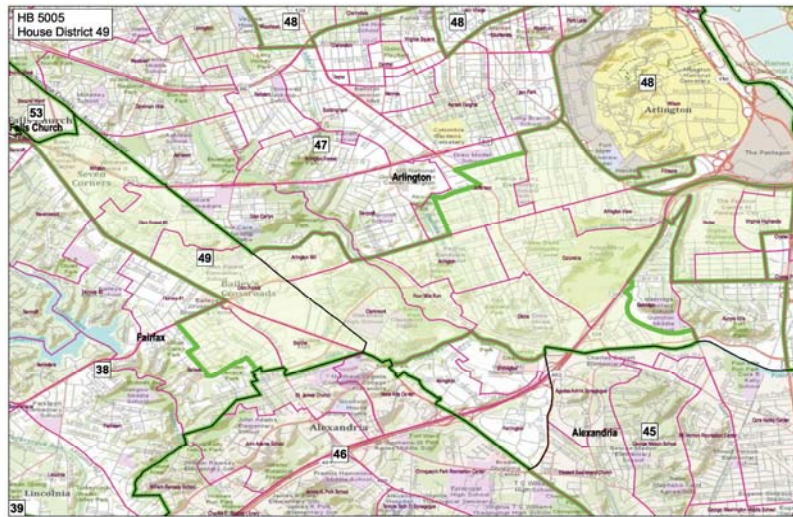
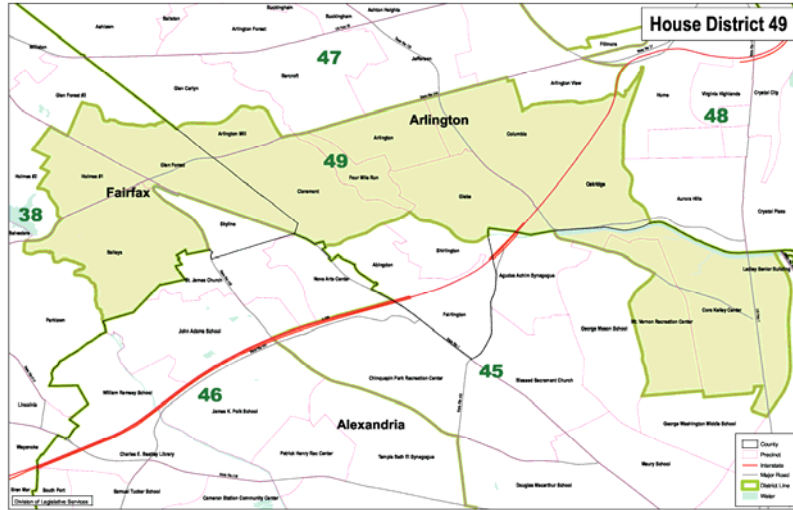


JA 1368



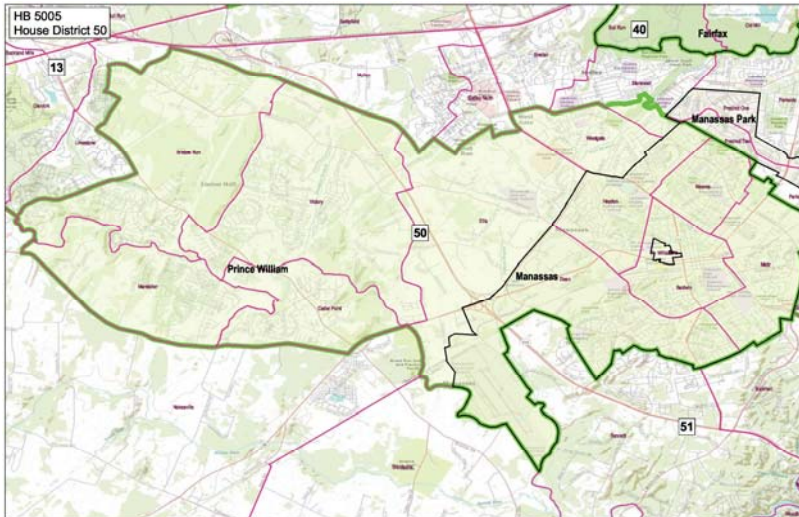
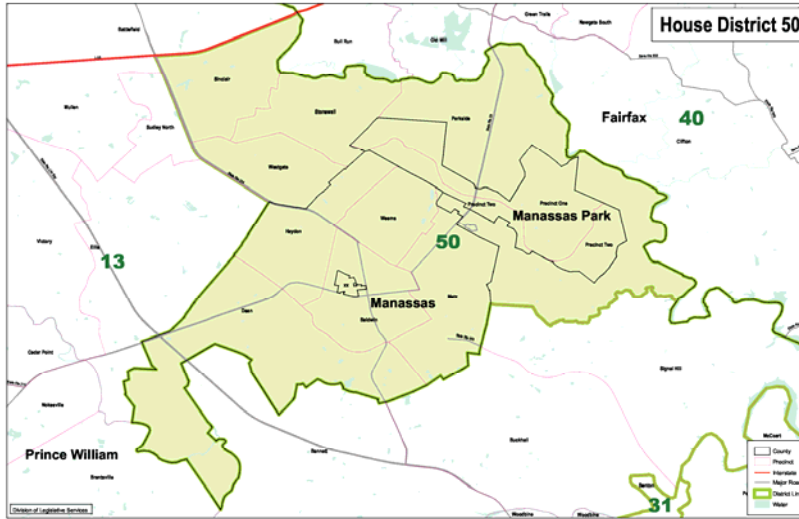
JA 1369





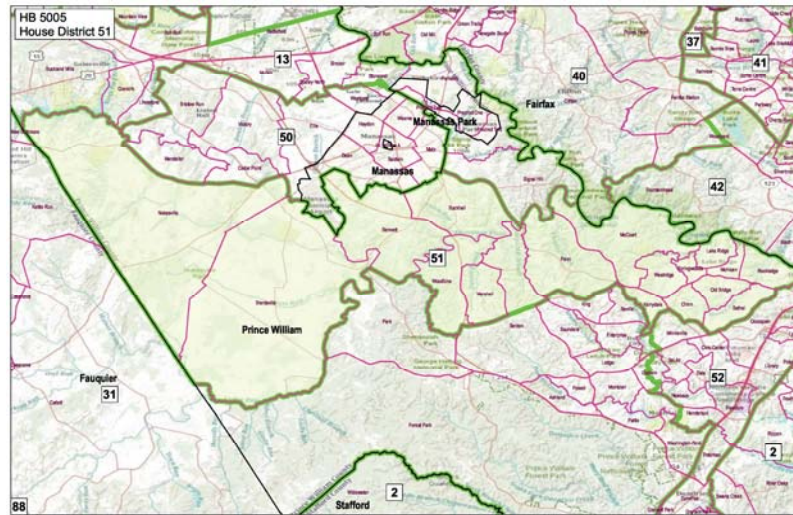
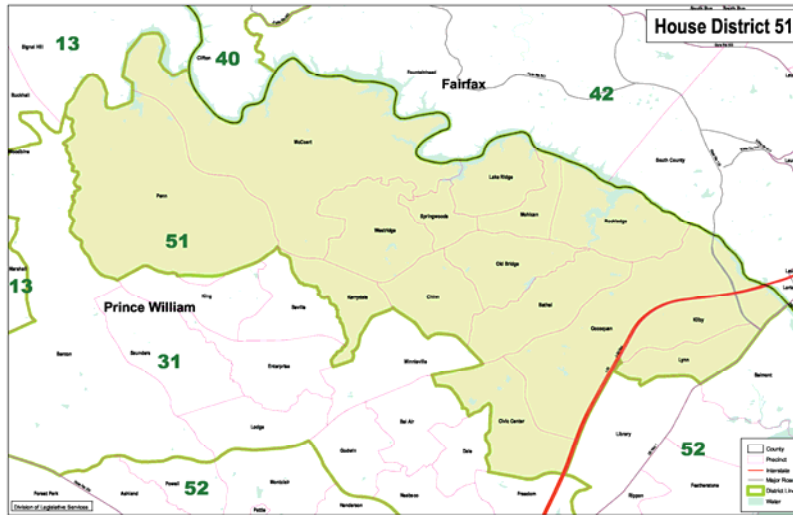


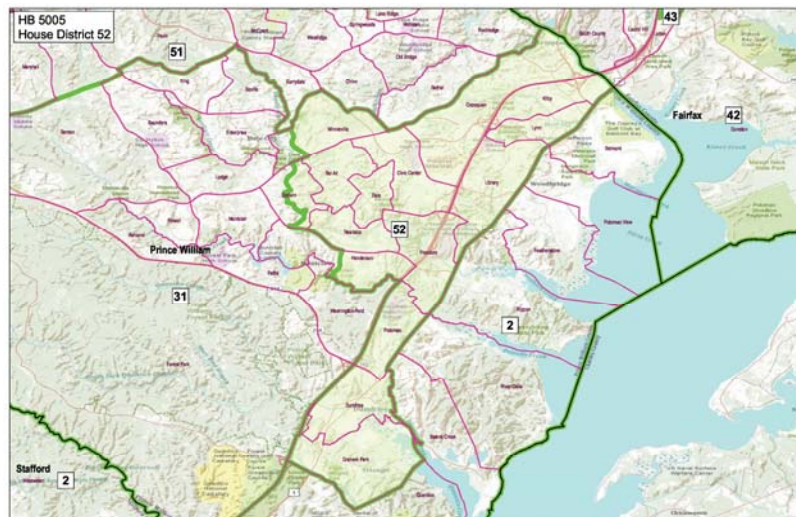
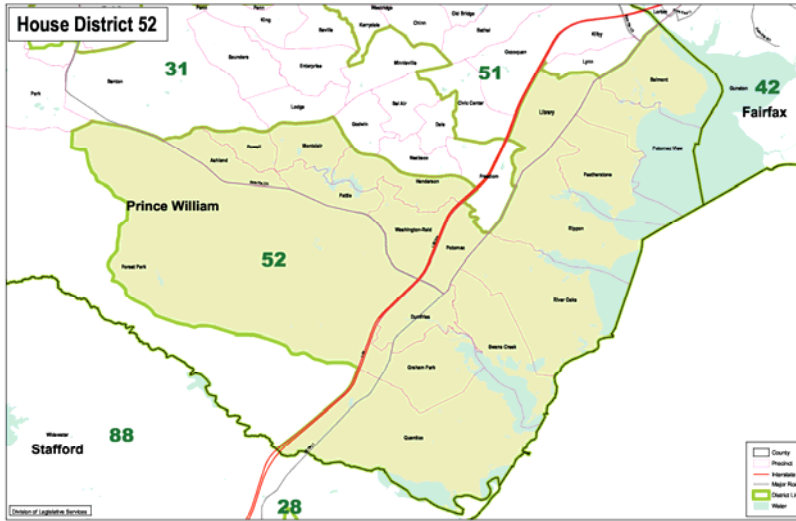
JA 1371

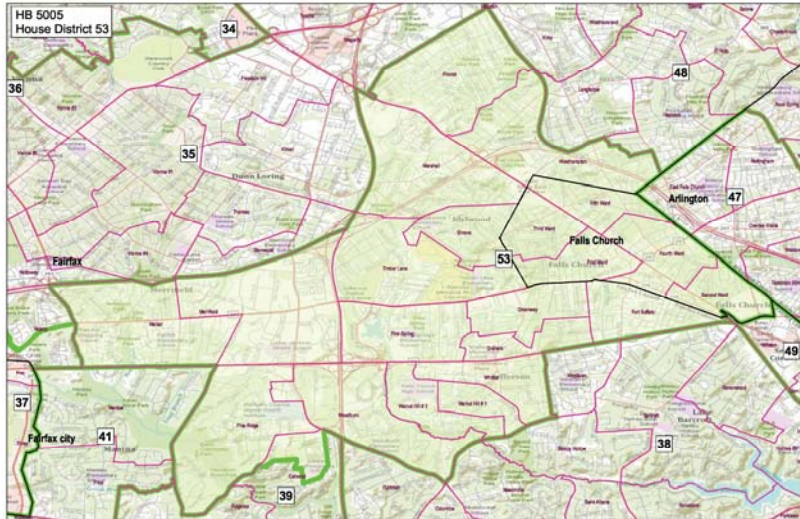
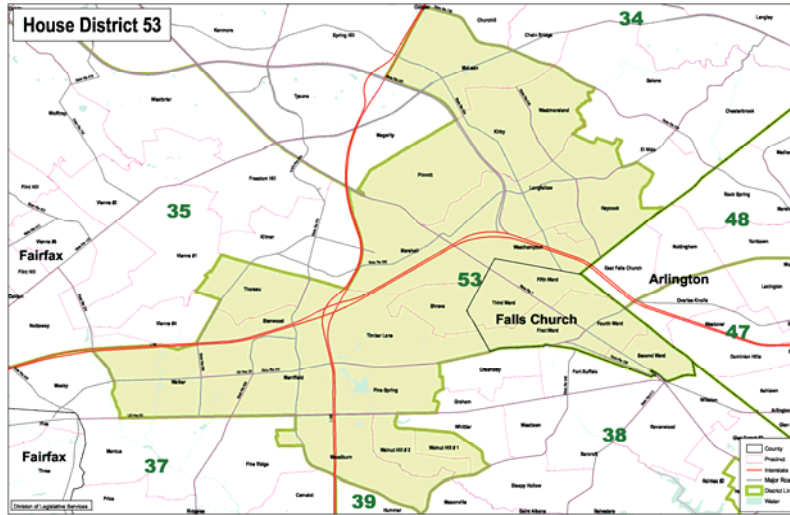


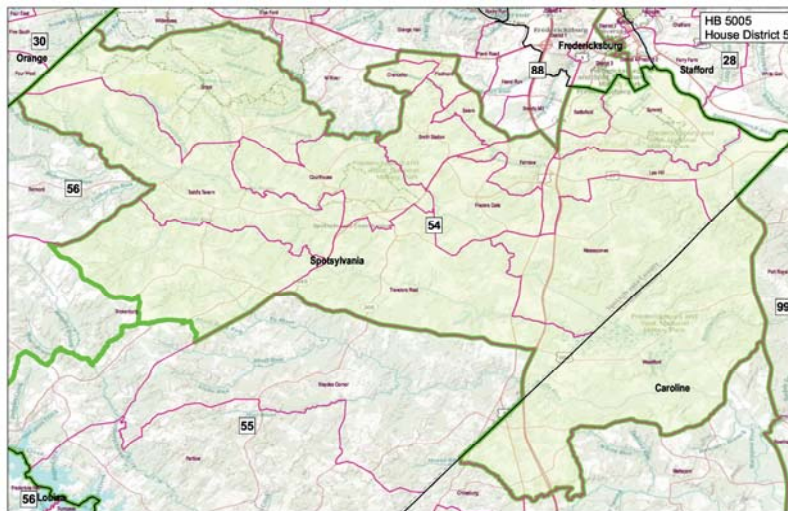
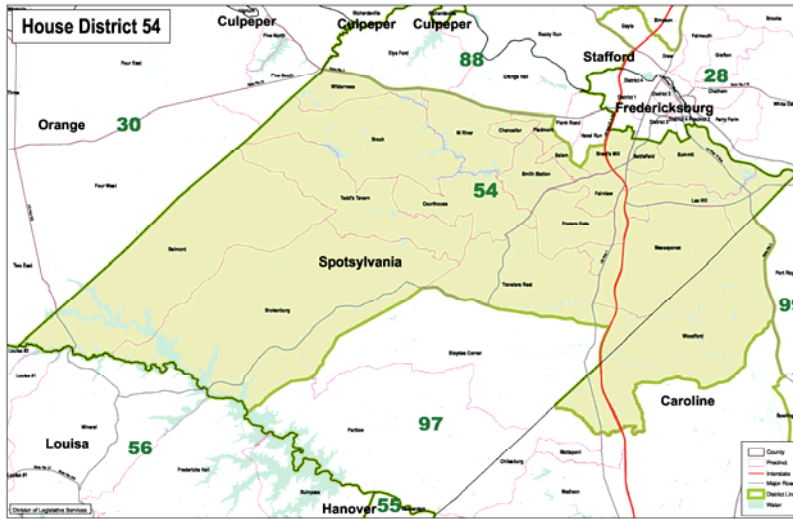


JA 1372



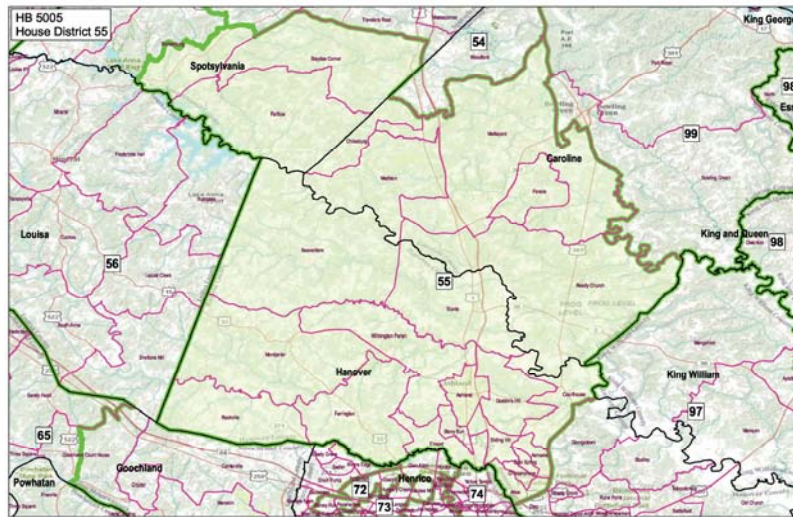
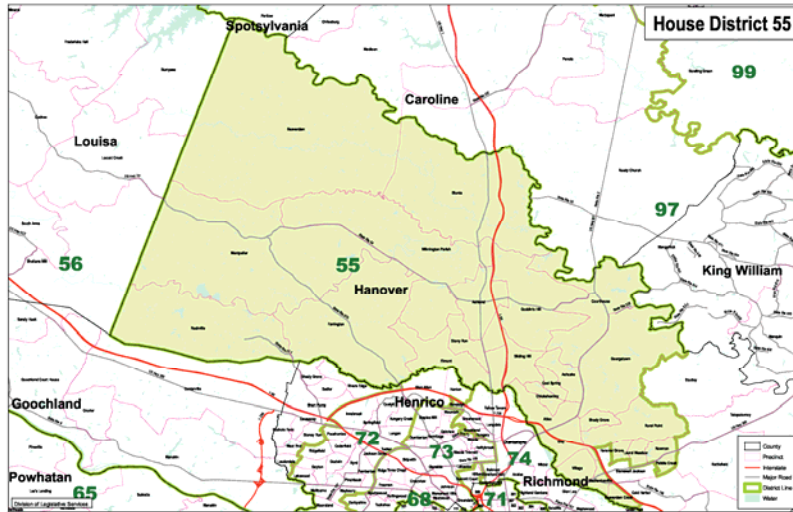


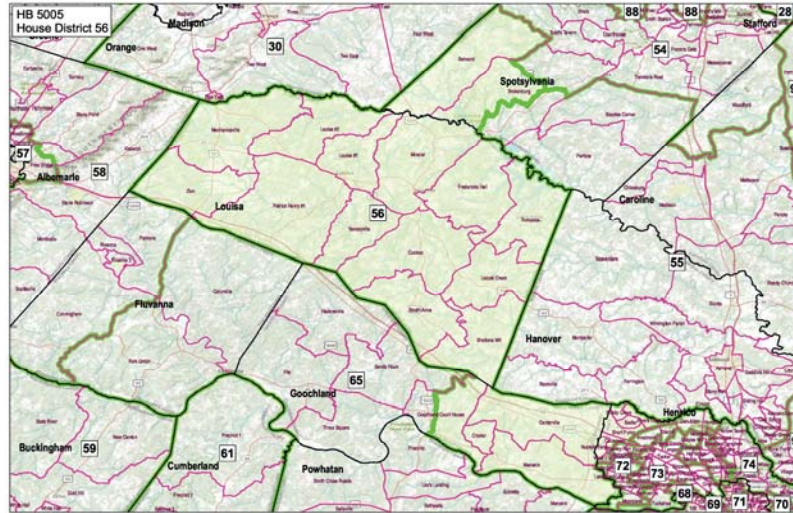
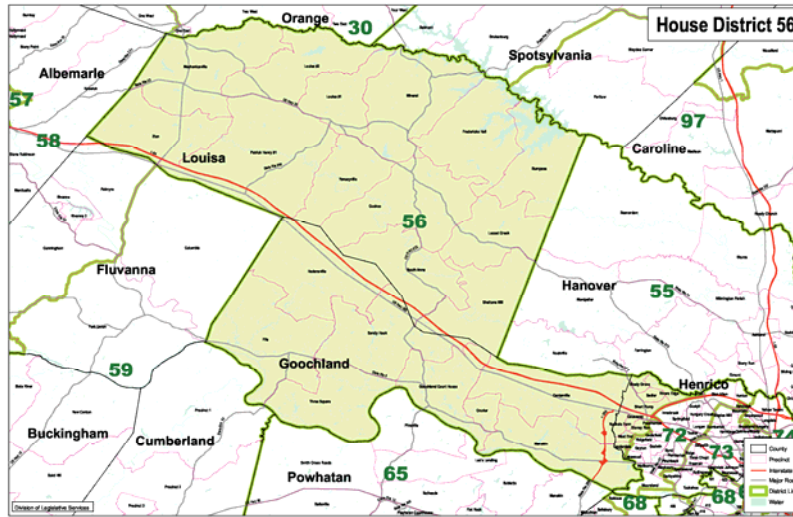




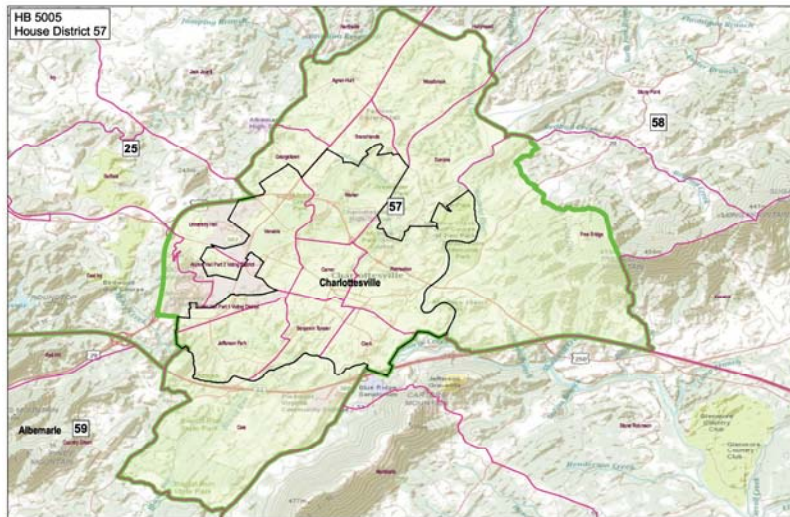
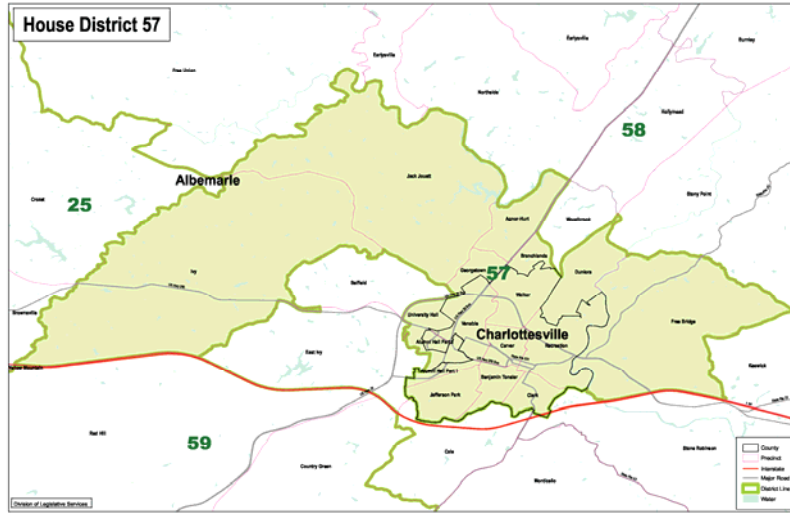


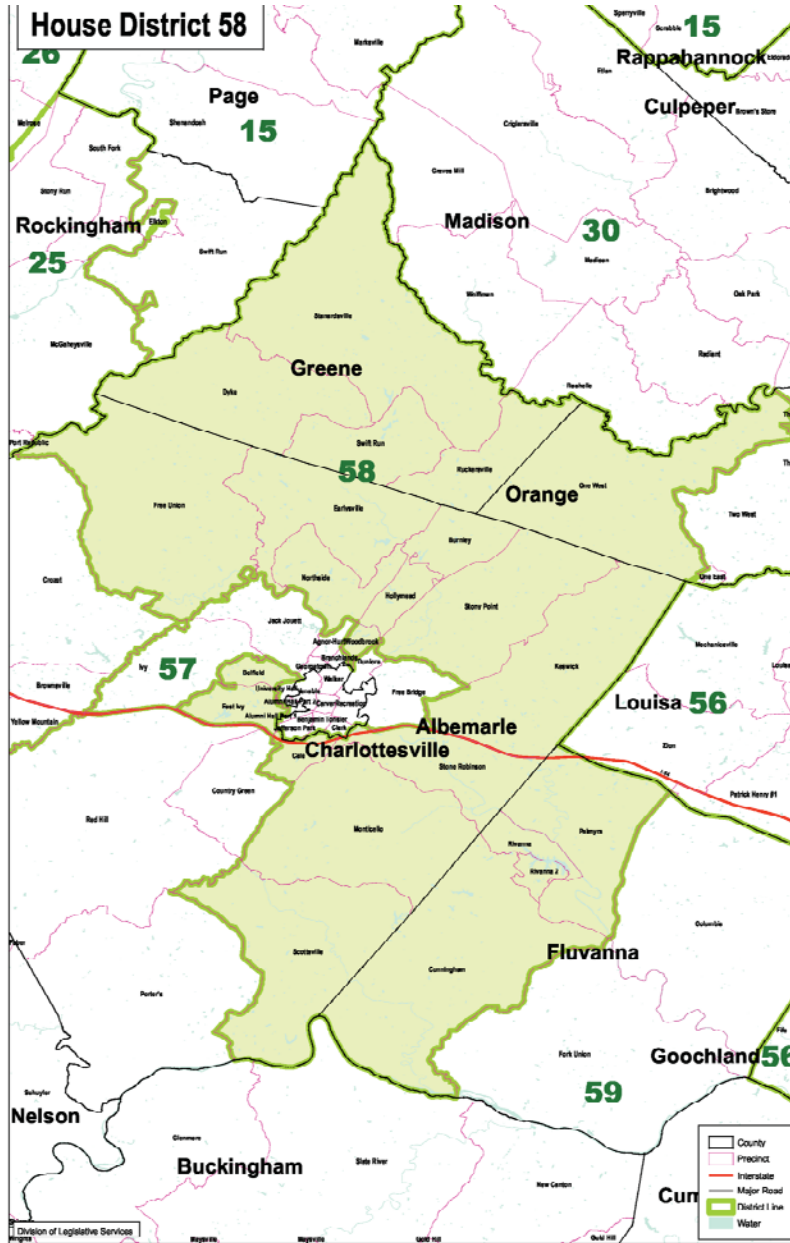
JA 1376



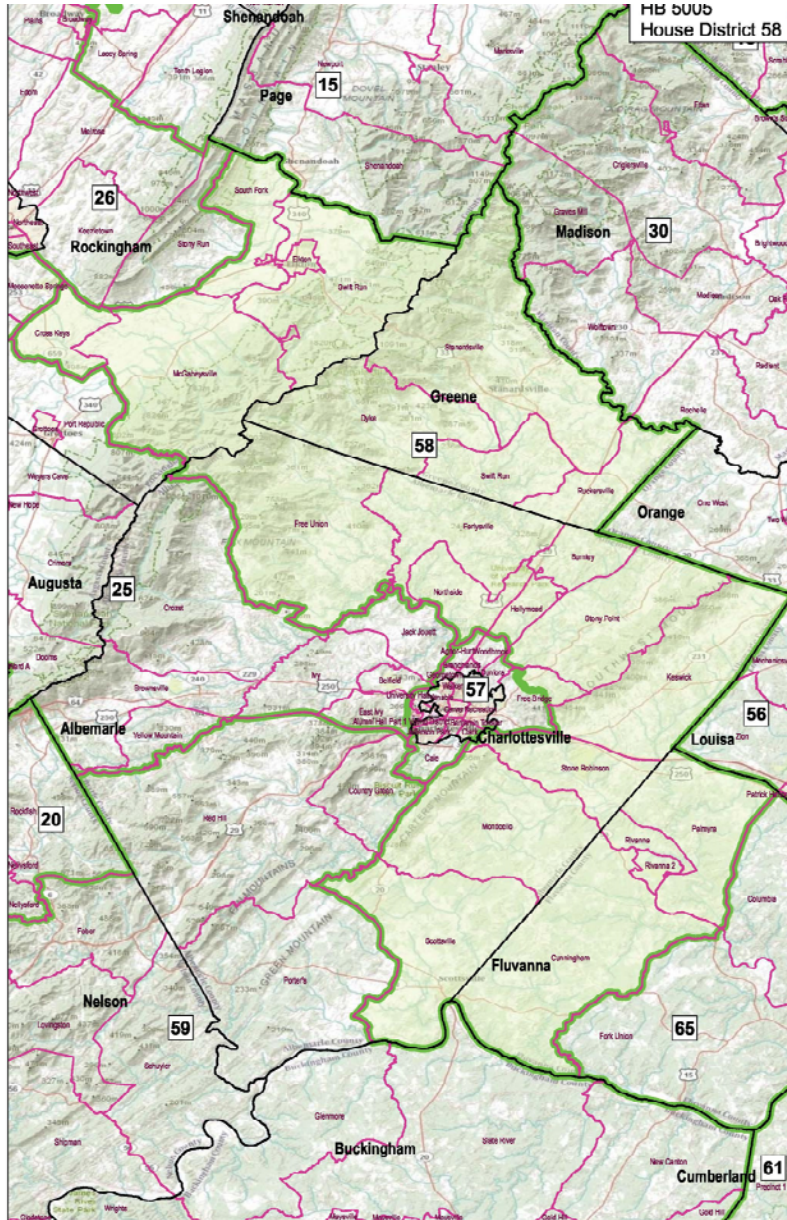


JA 1378

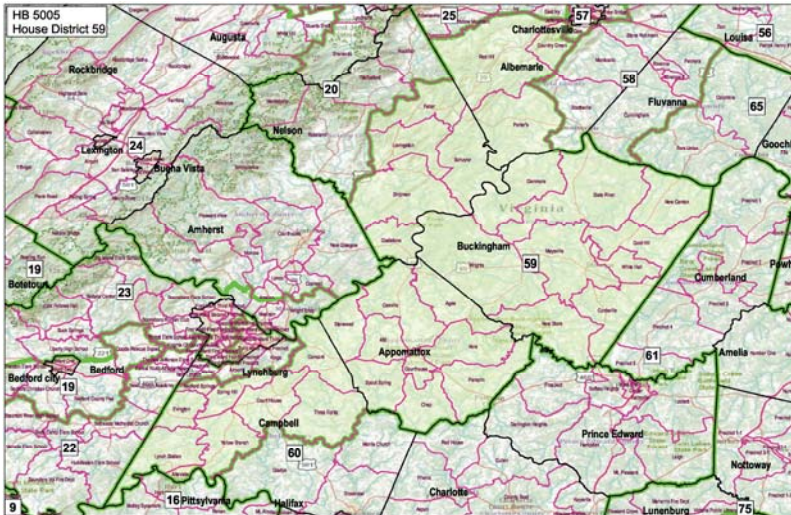
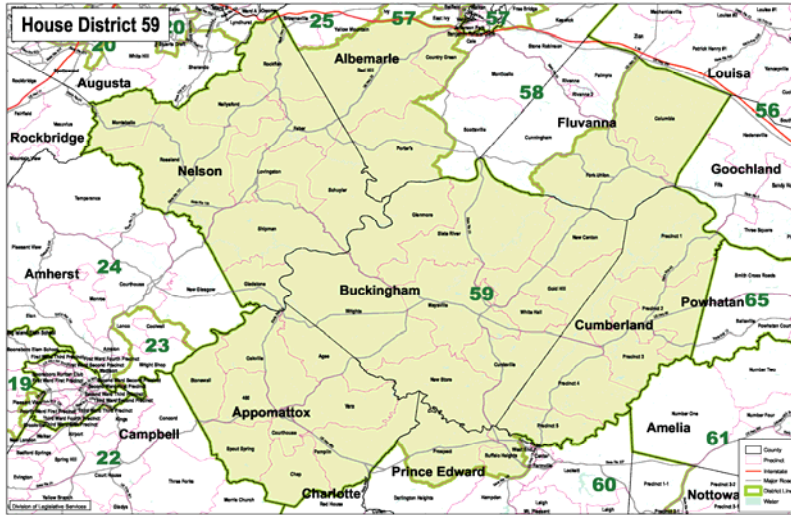




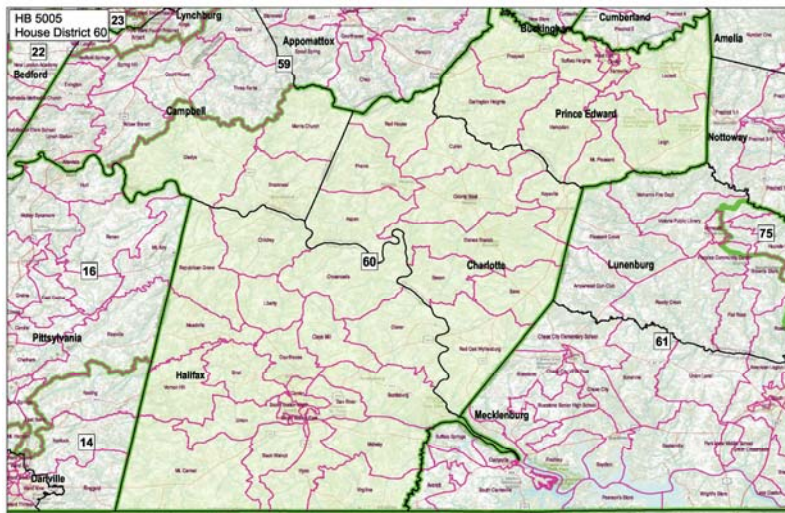
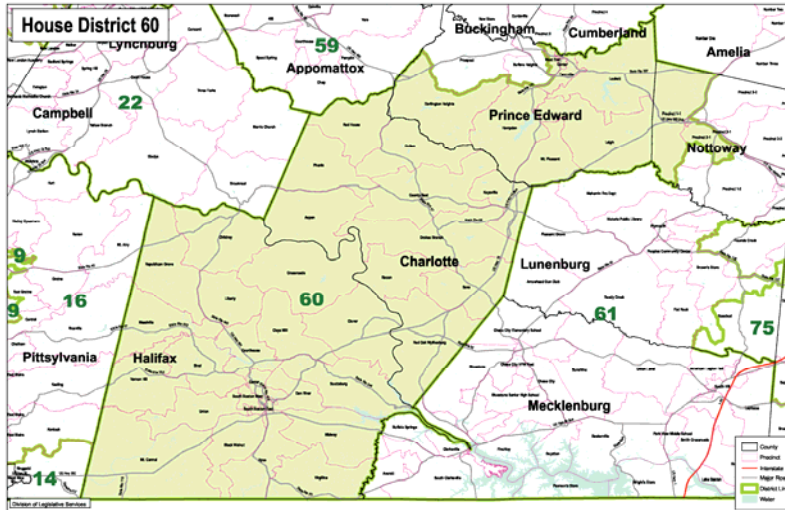


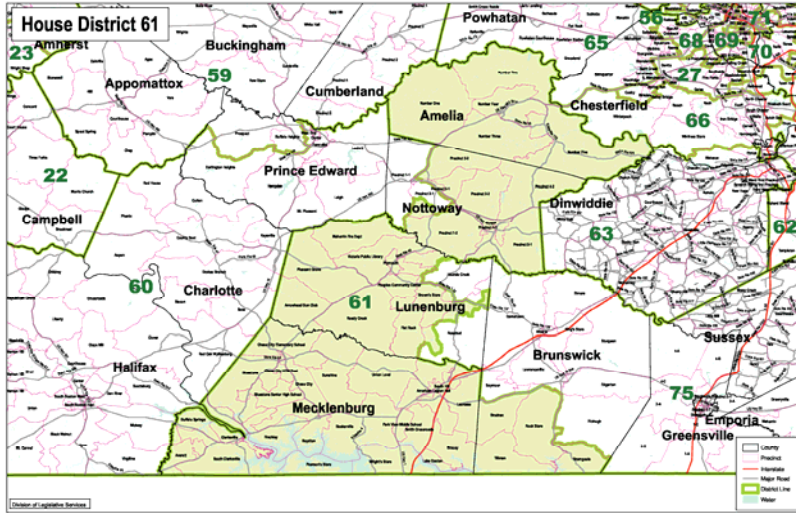


JA 1381

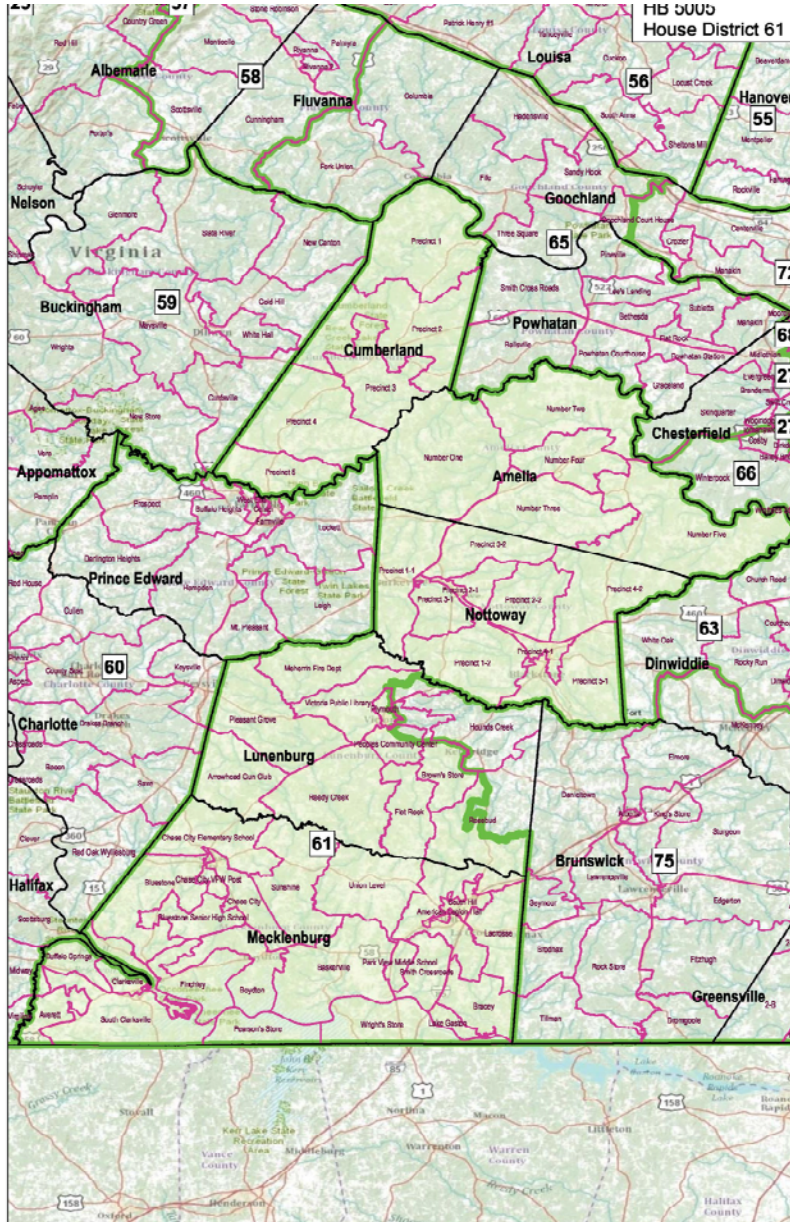


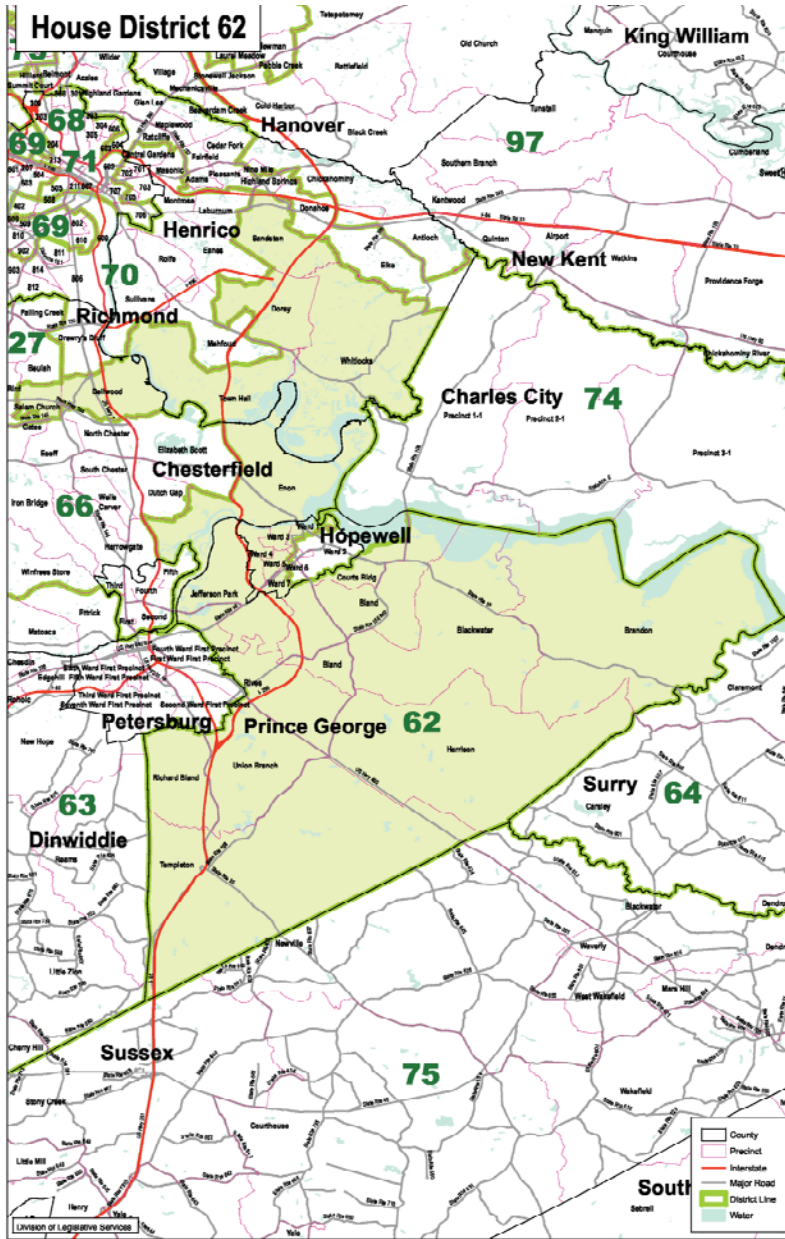












JA 1386

